

METTL20 Rabbit pAb

Catalog No.: A7152

Basic Information

Observed MW

33kDa

Calculated MW

29kDa

Category

Primary antibody

Applications

ELISA, WB

Cross-Reactivity

Mouse, Rat

Background

Enables heat shock protein binding activity and protein-lysine N-methyltransferase activity. Involved in negative regulation of electron transfer activity; negative regulation of fatty acid beta-oxidation using acyl-CoA dehydrogenase; and peptidyl-lysine trimethylation. Located in mitochondrial matrix. Part of protein-containing complex.

Recommended Dilutions

WB 1:500 - 1:2000

Immunogen Information

Gene ID

254013

Swiss Prot

Q8IXQ9

Immunogen

Recombinant fusion protein containing a sequence corresponding to amino acids 105-262 of human METTL20 (NP_001129335.1).

Synonyms

METTL20; C12orf72; ETFB-KMT

Contact

 | 400-999-6126

 | cn.market@abclonal.com.cn

 | www.abclonal.com.cn

Product Information

Source

Rabbit

Isotype

IgG

Purification

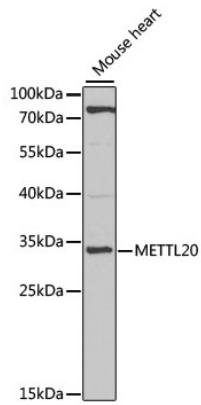
Affinity purification

Storage

Store at -20°C. Avoid freeze / thaw cycles.

Buffer: PBS with 0.02% sodium azide, 50% glycerol, pH7.3.

Validation Data



Western blot analysis of extracts of mouse heart, using METTL20 antibody (A7152) at 1:1000 dilution.
Secondary antibody: HRP Goat Anti-Rabbit IgG (H+L) (AS014) at 1:10000 dilution.
Lysates/proteins: 25µg per lane.
Blocking buffer: 3% nonfat dry milk in TBST.
Detection: ECL Basic Kit (RM00020).
Exposure time: 90s.