

IGFL3 Rabbit pAb

Catalog No.: A7154

Basic Information

Observed MW

14kDa

Calculated MW

14kDa

Category

Primary antibody

Applications

ELISA, WB

Cross-Reactivity

Mouse

Background

IGFL3 belongs to the insulin-like growth factor (IGF; see MIM 147440) family of signaling molecules that play critical roles in cellular energy metabolism and in growth and development, especially prenatal growth (Emtage et al., 2006 [PubMed 16890402]).

Recommended Dilutions

WB 1:500 - 1:2000

Immunogen Information

Gene ID

388555

Swiss Prot

Q6UXB1

Immunogen

Recombinant fusion protein containing a sequence corresponding to amino acids 25-125 of human IGFL3 (NP_997276.1).

Synonyms

UNQ483; IGFL3

Contact

 | 400-999-6126

 | cn.market@abclonal.com.cn

 | www.abclonal.com.cn

Product Information

Source

Rabbit

Isotype

IgG

Purification

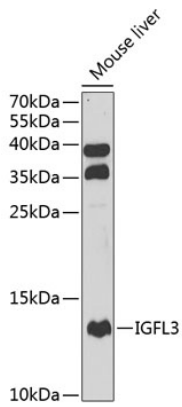
Affinity purification

Storage

Store at -20°C. Avoid freeze / thaw cycles.

Buffer: PBS with 0.02% sodium azide, 50% glycerol, pH7.3.

Validation Data



Western blot analysis of extracts of mouse liver, using IGFL3 antibody (A7154) at 1:1000 dilution.
Secondary antibody: HRP Goat Anti-Rabbit IgG (H+L) (AS014) at 1:10000 dilution.
Lysates/proteins: 25µg per lane.
Blocking buffer: 3% nonfat dry milk in TBST.
Detection: ECL Basic Kit (RM00020).
Exposure time: 90s.