

CCL26 Rabbit pAb

Catalog No.: A7175

1 Publications

Basic Information

Observed MW

11kDa

Calculated MW

11kDa

Category

Primary antibody

Applications

ELISA, WB

Cross-Reactivity

Human, Mouse, Rat

Background

This gene is one of two Cys-Cys (CC) cytokine genes clustered on the q arm of chromosome 7. Cytokines are a family of secreted proteins involved in immunoregulatory and inflammatory processes. The CC cytokines are proteins characterized by two adjacent cysteines. The cytokine encoded by this gene displays chemotactic activity for normal peripheral blood eosinophils and basophils. This protein also has antimicrobial activity, displaying an antibacterial effect on *S. pneumoniae*, *S. aureus*, Non-typeable *H. influenzae*, and *P. aeruginosa*. The product of this gene is one of three related chemokines that specifically activate chemokine receptor CCR3. This chemokine may contribute to the eosinophil accumulation in atopic diseases.

Recommended Dilutions

WB 1:500 - 1:2000

Immunogen Information

Gene ID

10344

Swiss Prot

Q9Y258

Immunogen

Recombinant fusion protein containing a sequence corresponding to amino acids 24-94 of human CCL26 (NP_006063.1).

Synonyms

IMAC; TSC-1; MIP-4a; SCYA26; MIP-4alpha; CCL26

Contact

 | 400-999-6126 | cn.market@abclonal.com.cn | www.abclonal.com.cn

Product Information

Source

Rabbit

Isotype

IgG

Purification

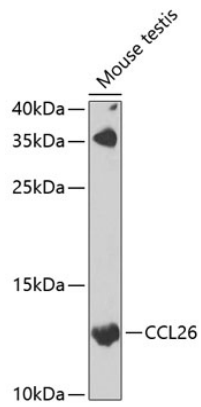
Affinity purification

Storage

Store at -20°C. Avoid freeze / thaw cycles.

Buffer: PBS with 0.02% sodium azide, 50% glycerol, pH 7.3.

Validation Data



Western blot analysis of lysates from mouse testis, using CCL26 Rabbit pAb (A7175) at 1:1000 dilution. Secondary antibody: HRP Goat Anti-Rabbit IgG (H+L) (AS014) at 1:10000 dilution. Lysates/proteins: 25µg per lane. Blocking buffer: 3% nonfat dry milk in TBST. Detection: ECL Enhanced Kit (RM00021). Exposure time: 90s.