

CNPY3 Rabbit pAb

Catalog No.: A7176

Basic Information

Observed MW

38kDa

Calculated MW

31kDa

Category

Primary antibody

Applications

ELISA, WB, IHC-P, IP

Cross-Reactivity

Human, Mouse

Background

This gene encodes a protein that binds members of the toll-like receptor protein family and functions as a chaperone to aid in folding and export of these proteins. Alternative splicing results in multiple transcript variants. Naturally occurring readthrough transcription occurs between this locus and the downstream GNMT (glycine N-methyltransferase) gene and is represented with GeneID:107080644.

Recommended Dilutions

WB 1:500 - 1:2000

IHC-P 1:50 - 1:200

IP 0.5µg-4µg antibody for
200µg-400µg extracts of
whole cells

Immunogen Information

Gene ID

10695

Swiss Prot

Q9BT09

Immunogen

Recombinant fusion protein containing a sequence corresponding to amino acids 31-278 of human CNPY3 (NP_006577.2).

Synonyms

CAG4A; DEE60; ERDA5; TNRC5; EIEE60; PRAT4A; CNPY3

Contact

☎ | 400-999-6126

✉ | cn.market@abclonal.com.cn

🌐 | www.abclonal.com.cn

Product Information

Source

Rabbit

Isotype

IgG

Purification

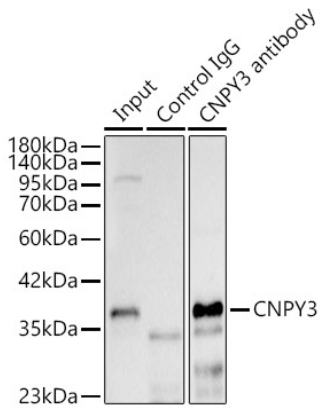
Affinity purification

Storage

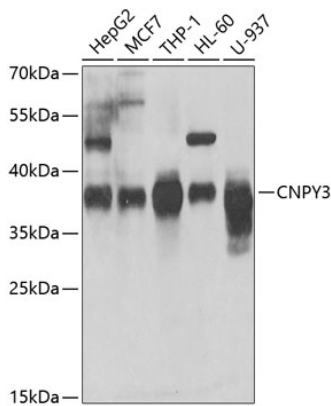
Store at -20°C. Avoid freeze / thaw cycles.

Buffer: PBS with 0.02% sodium azide, 50% glycerol, pH7.3.

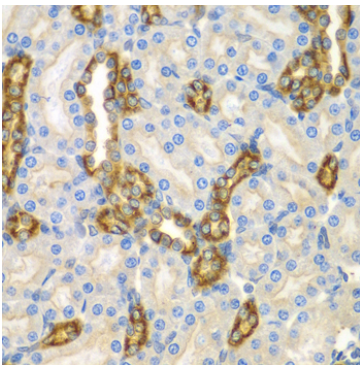
Validation Data



Immunoprecipitation analysis of 300ug extracts of THP-1 cells using 3ug CNPY3 Rabbit pAb (A7176 1:40). Western blot was performed from the immunoprecipitate using CNPY3 Rabbit pAb (A7176) at a dilution of 1:500.



Western blot analysis of various lysates using CNPY3 Rabbit pAb (A7176) at 1:1000 dilution. Secondary antibody: HRP Goat Anti-Rabbit IgG (H+L) (AS014) at 1:10000 dilution. Lysates/proteins: 25µg per lane. Blocking buffer: 3% nonfat dry milk in TBST. Detection: ECL Enhanced Kit (RM00021). Exposure time: 15s.



Immunohistochemistry analysis of paraffin-embedded Mouse kidney using CNPY3 Rabbit pAb (A7176) at dilution of 1:100 (40x lens). Perform microwave antigen retrieval with 10 mM PBS buffer pH 7.2 before commencing with IHC staining protocol.