

KLF15 Rabbit pAb

Catalog No.: A7194

1 Publications

Basic Information

Observed MW

62kDa

Calculated MW

44kDa

Category

Primary antibody

Applications

ELISA, WB

Cross-Reactivity

Human

Background

Enables DNA-binding transcription activator activity, RNA polymerase II-specific and RNA polymerase II cis-regulatory region sequence-specific DNA binding activity. Involved in negative regulation of peptidyl-lysine acetylation and positive regulation of transcription by RNA polymerase II. Located in nuclear speck.

Recommended Dilutions

WB 1:500 - 1:2000

Immunogen Information

Gene ID

28999

Swiss Prot

Q9UIH9

Immunogen

Recombinant fusion protein containing a sequence corresponding to amino acids 1-260 of human KLF15 (NP_054798.1).

Synonyms

KKLF; KLF15

Contact

☎ | 400-999-6126

✉ | cn.market@abclonal.com.cn

🌐 | www.abclonal.com.cn

Product Information

Source

Rabbit

Isotype

IgG

Purification

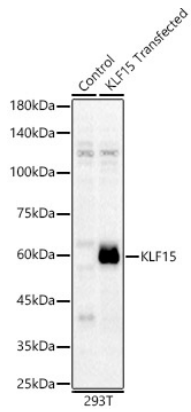
Affinity purification

Storage

Store at -20°C. Avoid freeze / thaw cycles.

Buffer: PBS with 0.02% sodium azide, 50% glycerol, pH7.3.

Validation Data



Western blot analysis of lysates from wild type (WT) and 293T cells transfected with KLF15 using KLF15 Rabbit pAb (A7194) at 1:1000 dilution.
Secondary antibody: HRP Goat Anti-Rabbit IgG (H+L) (AS014) at 1:10000 dilution.
Lysates/proteins: 25µg per lane.
Blocking buffer: 3% nonfat dry milk in TBST.
Detection: ECL Basic Kit (RM00020).
Exposure time: 30s.