

# KLF3 Rabbit pAb

Catalog No.: A7195

2 Publications

## Basic Information

### Observed MW

39kDa

### Calculated MW

39kDa

### Category

Primary antibody

### Applications

ELISA, WB, IF/ICC

### Cross-Reactivity

Human

## Background

Enables sequence-specific double-stranded DNA binding activity. Predicted to be involved in regulation of transcription by RNA polymerase II. Located in nucleoplasm.

## Recommended Dilutions

WB 1:500 - 1:2000

IF/ICC 1:50 - 1:100

## Immunogen Information

### Gene ID

51274

### Swiss Prot

P57682

### Immunogen

Recombinant fusion protein containing a sequence corresponding to amino acids 1-240 of human KLF3 (NP\_057615.3).

### Synonyms

BKLF; KLF3

## Contact

☎ | 400-999-6126

✉ | [cn.market@abclonal.com.cn](mailto:cn.market@abclonal.com.cn)

🌐 | [www.abclonal.com.cn](http://www.abclonal.com.cn)

## Product Information

### Source

Rabbit

### Isotype

IgG

### Purification

Affinity purification

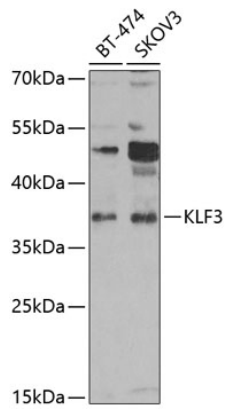
### Storage

Store at -20°C. Avoid freeze / thaw cycles.

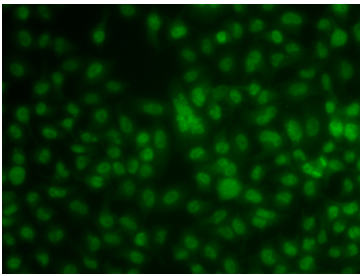
Buffer: PBS with 0.02% sodium azide, 50% glycerol, pH 7.3.

## Validation Data

---



Western blot analysis of extracts of various cell lines, using KLF3 antibody (A7195) at 1:1000 dilution. Secondary antibody: HRP Goat Anti-Rabbit IgG (H+L) (AS014) at 1:10000 dilution. Lysates/proteins: 25µg per lane. Blocking buffer: 3% nonfat dry milk in TBST. Detection: ECL Enhanced Kit (RM00021). Exposure time: 60s.



Immunofluorescence analysis of A549 cells using KLF3 antibody (A7195).