

# CDC16 Rabbit pAb

Catalog No.: A7197 **1 Publications**

## Basic Information

**Observed MW**

72kDa

**Calculated MW**

72kDa

**Category**

Primary antibody

**Applications**

ELISA, WB, IHC-P

**Cross-Reactivity**

Human, Mouse, Rat

## Background

The protein encoded by this gene functions as a protein ubiquitin ligase and is a component of the multiprotein APC complex. The APC complex is a cyclin degradation system that governs exit from mitosis by targeting cell cycle proteins for degradation by the 26S proteasome. Each component protein of the APC complex is highly conserved among eukaryotic organisms. This protein, and other APC complex proteins, contain a tetratricopeptide repeat (TPR) domain; a protein domain that is often involved in protein-protein interactions and the assembly of multiprotein complexes. Multiple alternatively spliced transcript variants, encoding distinct proteins, have been identified.

## Recommended Dilutions

<b>WB</b>	1:500 - 1:2000
<b>IHC-P</b>	1:50 - 1:200

## Immunogen Information

**Gene ID**

8881

**Swiss Prot**

Q13042

**Immunogen**

Recombinant fusion protein containing a sequence corresponding to amino acids 371-620 of human CDC16 (NP\_003894.3).

**Synonyms**

APC6; CUT9; ANAPC6; CDC16Hs; CDC16

## Contact

 | 400-999-6126 | [cn.market@abclonal.com.cn](mailto:cn.market@abclonal.com.cn) | [www.abclonal.com.cn](http://www.abclonal.com.cn)

## Product Information

**Source**

Rabbit

**Isotype**

IgG

**Purification**

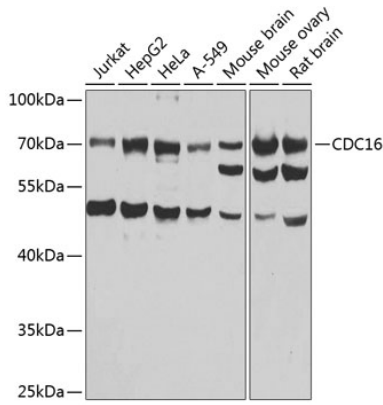
Affinity purification

**Storage**

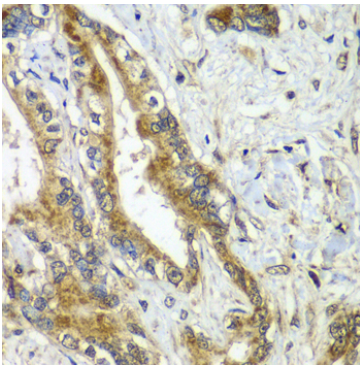
Store at -20°C. Avoid freeze / thaw cycles.

Buffer: PBS with 0.02% sodium azide, 50% glycerol, pH7.3.

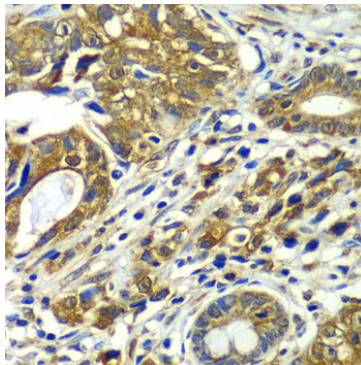
## Validation Data



Western blot analysis of various lysates using CDC16 Rabbit pAb (A7197) at 1:1000 dilution.  
Secondary antibody: HRP Goat Anti-Rabbit IgG (H+L) (AS014) at 1:10000 dilution.  
Lysates/proteins: 25µg per lane.  
Blocking buffer: 3% nonfat dry milk in TBST.  
Detection: ECL Basic Kit (RM00020).  
Exposure time: 10s.



Immunohistochemistry analysis of paraffin-embedded Human liver cancer using CDC16 Rabbit pAb (A7197) at dilution of 1:100 (40x lens). Perform microwave antigen retrieval with 10 mM PBS buffer pH 7.2 before commencing with IHC staining protocol.



Immunohistochemistry analysis of paraffin-embedded Human gastric cancer using CDC16 Rabbit pAb (A7197) at dilution of 1:100 (40x lens). Perform microwave antigen retrieval with 10 mM PBS buffer pH 7.2 before commencing with IHC staining protocol.