

[KO Validated] LC3B Rabbit pAb

Catalog No.: A7198SP **KO Validated** **56 Publications**

Basic Information

Observed MW

14 kDa/16 kDa

Calculated MW

15 kDa

Category

Primary antibody

Applications

WB,IP,IF/ICC,IHC-P,ELISA

Cross-Reactivity

Human, Mouse, Rat

Background

The product of this gene is a subunit of neuronal microtubule-associated MAP1A and MAP1B proteins, which are involved in microtubule assembly and important for neurogenesis. Studies on the rat homolog implicate a role for this gene in autophagy, a process that involves the bulk degradation of cytoplasmic component.

Recommended Dilutions

WB 1:1000 - 1:2000

IP 0.5 µg - 4 µg antibody for
200 µg - 600 µg extracts
of whole cells

IF/ICC 1:100-1:200

IHC-P 1:1000 - 1:4000

ELISA Recommended starting concentration is 1 µg/mL. Please optimize the concentration based on your specific assay requirements. For high-ratio antibody dilutions ($\geq 1:10000$) a sequential dilution method is strongly recommended to ensure measurement accuracy.

Immunogen Information

Gene ID

81631

Swiss Prot

Q9GZQ8

Immunogen

This information is considered to be commercially sensitive.

Synonyms

LC3B; ATG8F; MAP1LC3B-a; MAP1A/1BLC3; 3B

Product Information

Source

Rabbit

Isotype

IgG

Purification

Affinity purification

Storage

Store at -20°C. Avoid freeze / thaw cycles.

Buffer: PBS, pH 7.3, containing 50% glycerol. Preserved with Proclin300 or sodium azide. May contain 0.05% BSA as specified on the Certificate of Analysis.

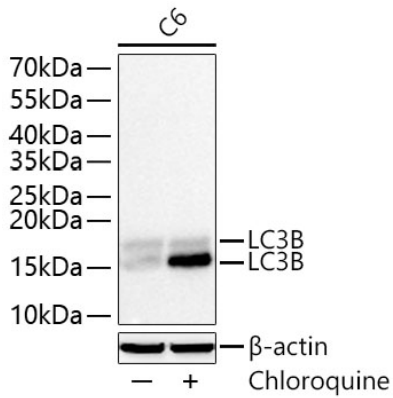
Contact

 | 400-999-6126

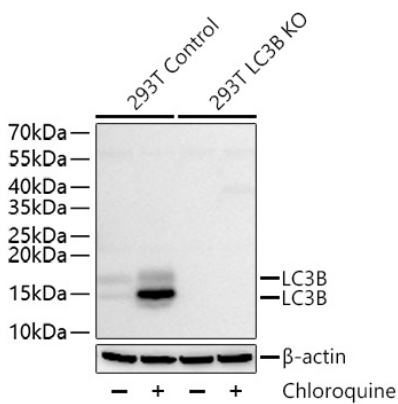
 | cn.market@abclonal.com.cn

 | www.abclonal.com.cn

Validation Data



Western blot analysis of lysates from C6 cells using [KO Validated] LC3B Rabbit pAb (A7198SP) at 1:1000 dilution incubated at room temperature for 1.5 hours. C6 cells were treated with Chloroquine (50 μ M) at 37°C for 20 hours.
Secondary antibody: HRP-conjugated Goat anti-Rabbit IgG (H+L) (AS014) at 1:10000 dilution.
Lysates/proteins: 30 μ g per lane.
Blocking buffer: 3% nonfat dry milk in TBST.
Detection: ECL Basic Kit (RM00020).
Exposure time: 1 s.



Western blot analysis of lysates from wild type (WT) and LC3B knockout (KO) 293T cells using [KO Validated] LC3B Rabbit pAb (A7198SP) at 1:1000 dilution incubated at room temperature for 1.5 hours. 293T cells were treated with Chloroquine (50 μ M) at 37°C for 48 hours.
Secondary antibody: HRP-conjugated Goat anti-Rabbit IgG (H+L) (AS014) at 1:10000 dilution.
Lysates/proteins: 30 μ g per lane.
Blocking buffer: 3% nonfat dry milk in TBST.
Detection: ECL Basic Kit (RM00020).
Exposure time: 20 s.