

NAT8B Rabbit pAb

Catalog No.: A7203

Basic Information

Observed MW

25kDa

Calculated MW

25kDa

Category

Primary antibody

Applications

ELISA, WB, IHC-P

Cross-Reactivity

Human, Mouse, Rat

Background

This gene is highly similar to the N-acetyltransferase 8 (NAT8) gene which encodes a kidney and liver protein with homology to bacterial acetyltransferases involved in drug resistance. This gene is localized on chromosome 2 in the vicinity of the NAT8 gene and represents a human-specific transcribed pseudogene of NAT8. This gene contains two common polymorphic nonsense mutations that disrupt the active site of the protein. In the extremely rare event when both nonsense mutations are absent, the predicted protein would contain a complete acetyltransferase domain and would be identical in length to NAT8.

Recommended Dilutions

WB	1:500 - 1:2000
IHC-P	1:50 - 1:200

Immunogen Information

Gene ID

51471

Swiss Prot

Q9UHF3

Immunogen

Recombinant fusion protein containing a sequence corresponding to amino acids 75-165 of human NAT8B (NP_057431.2).

Synonyms

CML2; Hcml2; NAT8BP; NAT8B

Contact

 | 400-999-6126

 | cn.market@abclonal.com.cn

 | www.abclonal.com.cn

Product Information

Source

Rabbit

Isotype

IgG

Purification

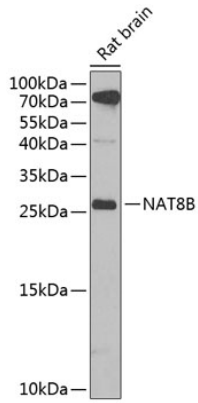
Affinity purification

Storage

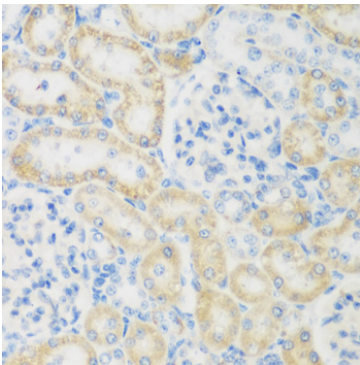
Store at -20°C. Avoid freeze / thaw cycles.

Buffer: PBS with 0.02% sodium azide, 50% glycerol, pH 7.3.

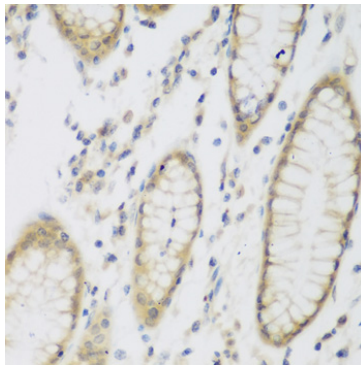
Validation Data



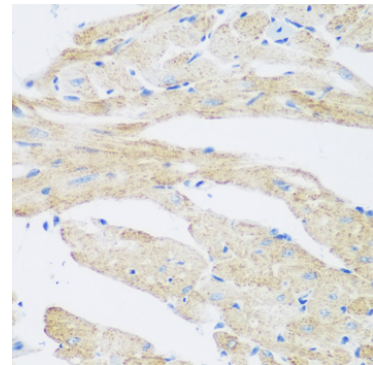
Western blot analysis of lysates from rat brain, using NAT8B Rabbit pAb (A7203) at 1:1000 dilution.
Secondary antibody: HRP Goat Anti-Rabbit IgG (H+L) (AS014) at 1:10000 dilution.
Lysates/proteins: 25µg per lane.
Blocking buffer: 3% nonfat dry milk in TBST.
Detection: ECL Enhanced Kit (RM00021).
Exposure time: 90s.



Immunohistochemistry analysis of paraffin-embedded Rat kidney using NAT8B Rabbit pAb (A7203) at dilution of 1:200 (40x lens). Perform microwave antigen retrieval with 10 mM PBS buffer pH 7.2 before commencing with IHC staining protocol.



Immunohistochemistry analysis of paraffin-embedded Human stomach using NAT8B Rabbit pAb (A7203) at dilution of 1:200 (40x lens). Perform microwave antigen retrieval with 10 mM PBS buffer pH 7.2 before commencing with IHC staining protocol.



Immunohistochemistry analysis of paraffin-embedded Mouse heart using NAT8B Rabbit pAb (A7203) at dilution of 1:200 (40x lens). Perform microwave antigen retrieval with 10 mM PBS buffer pH 7.2 before commencing with IHC staining protocol.