

PECR Rabbit pAb

Catalog No.: A7206 **1 Publications**

Basic Information

Observed MW

33kDa

Calculated MW

33kDa

Category

Primary antibody

Applications

ELISA, WB

Cross-Reactivity

Mouse

Background

Enables signaling receptor binding activity and trans-2-enoyl-CoA reductase (NADPH) activity. Involved in phytol metabolic process. Located in peroxisome.

Recommended Dilutions

WB 1:500 - 1:2000

Immunogen Information

Gene ID

55825

Swiss Prot

Q9BY49

Immunogen

Recombinant fusion protein containing a sequence corresponding to amino acids 24-303 of human PECR (NP_060911.2).

Synonyms

TERP; DCRRP; PVIARL; HPDHASE; SDR29C1; HSA250303; PECR

Contact

 | 400-999-6126

 | cn.market@abclonal.com.cn

 | www.abclonal.com.cn

Product Information

Source

Rabbit

Isotype

IgG

Purification

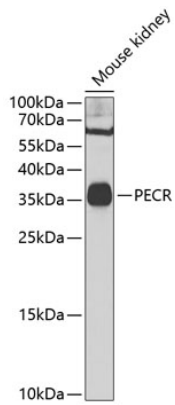
Affinity purification

Storage

Store at -20°C. Avoid freeze / thaw cycles.

Buffer: PBS with 0.02% sodium azide, 50% glycerol, pH7.3.

Validation Data



Western blot analysis of extracts of mouse kidney, using PECR Antibody (A7206) at 1:1000 dilution.
Secondary antibody: HRP Goat Anti-Rabbit IgG (H+L) (AS014) at 1:10000 dilution.
Lysates/proteins: 25µg per lane.
Blocking buffer: 3% nonfat dry milk in TBST.
Detection: ECL Basic Kit (RM00020).
Exposure time: 30s.