

PHYHD1 Rabbit pAb

Catalog No.: A7208

Basic Information

Observed MW

32kDa

Calculated MW

32kDa

Category

Primary antibody

Applications

ELISA, WB, IF/ICC

Cross-Reactivity

Human, Mouse, Rat

Background

Enables 2-oxoglutarate-dependent dioxygenase activity.

Recommended Dilutions

WB 1:500 - 1:2000

IF/ICC 1:50 - 1:100

Immunogen Information

Gene ID

254295

Swiss Prot

Q5SRE7

Immunogen

Recombinant fusion protein containing a sequence corresponding to amino acids 1-291 of human PHYHD1 (NP_001094346.1).

Synonyms

PHYHD1

Contact

☎ | 400-999-6126

✉ | cn.market@abclonal.com.cn

🌐 | www.abclonal.com.cn

Product Information

Source

Rabbit

Isotype

IgG

Purification

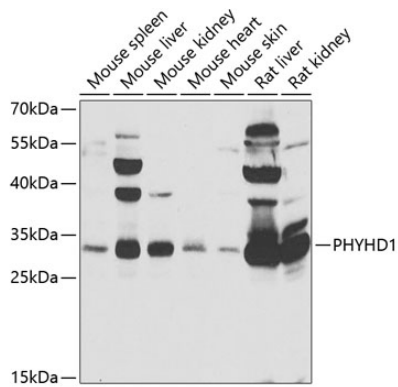
Affinity purification

Storage

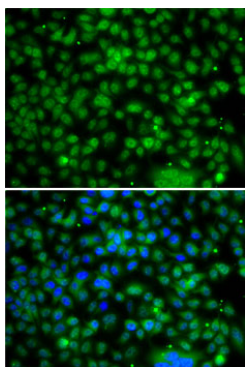
Store at -20°C. Avoid freeze / thaw cycles.

Buffer: PBS with 0.02% sodium azide, 50% glycerol, pH7.3.

Validation Data



Western blot analysis of extracts of various cell lines, using PHYHD1 antibody (A7208) at 1:1000 dilution.
Secondary antibody: HRP Goat Anti-Rabbit IgG (H+L) (AS014) at 1:10000 dilution.
Lysates/proteins: 25µg per lane.
Blocking buffer: 3% nonfat dry milk in TBST.
Detection: ECL Enhanced Kit (RM00021).
Exposure time: 90s.



Immunofluorescence analysis of A-549 cells using PHYHD1 antibody (A7208). Blue: DAPI for nuclear staining.