

# SAT2 Rabbit pAb

Catalog No.: A7211

## Basic Information

### Observed MW

19kDa

### Calculated MW

19kDa

### Category

Primary antibody

### Applications

ELISA, WB, IF/ICC

### Cross-Reactivity

Human, Rat

## Background

Enables diamine N-acetyltransferase activity and identical protein binding activity. Involved in polyamine metabolic process. Located in extracellular exosome.

## Recommended Dilutions

WB 1:100 - 1:500

IF/ICC 1:50 - 1:100

## Immunogen Information

### Gene ID

112483

### Swiss Prot

Q96F10

### Immunogen

Recombinant fusion protein containing a sequence corresponding to amino acids 1-170 of human SAT2 (NP\_597998.1).

### Synonyms

SSAT2; SSAT-2; SAT2

## Contact

☎ | 400-999-6126

✉ | [cn.market@abclonal.com.cn](mailto:cn.market@abclonal.com.cn)

🌐 | [www.abclonal.com.cn](http://www.abclonal.com.cn)

## Product Information

### Source

Rabbit

### Isotype

IgG

### Purification

Affinity purification

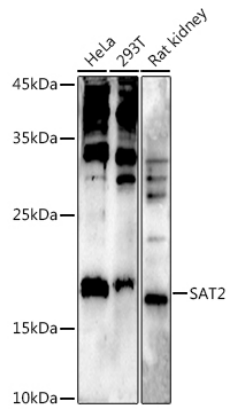
### Storage

Store at -20°C. Avoid freeze / thaw cycles.

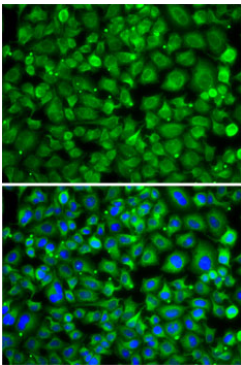
Buffer: PBS with 0.02% sodium azide, 50% glycerol, pH7.3.

## Validation Data

---



Western blot analysis of extracts of various cell lines, using (A7211) at 1:500 dilution.  
Secondary antibody: HRP Goat Anti-Rabbit IgG (H+L) (AS014) at 1:10000 dilution.  
Lysates/proteins: 25µg per lane.  
Blocking buffer: 3% nonfat dry milk in TBST.  
Detection: ECL Enhanced Kit (RM00021).  
Exposure time: 90s.



Immunofluorescence analysis of A-549 cells using SAT2 antibody (A7211). Blue: DAPI for nuclear staining.