

SMCHD1 Rabbit pAb

Catalog No.: A7214

Basic Information

Observed MW

246kDa

Calculated MW

226kDa

Category

Primary antibody

Applications

ELISA, WB, IF/ICC

Cross-Reactivity

Human, Rat

Background

This gene encodes a protein which contains a hinge region domain found in members of the SMC (structural maintenance of chromosomes) protein family.

Recommended Dilutions

WB 1:500 - 1:2000

IF/ICC 1:50 - 1:100

Immunogen Information

Gene ID

23347

Swiss Prot

A6NHR9

Immunogen

Recombinant fusion protein containing a sequence corresponding to amino acids 1756-2005 of human SMCHD1 (NP_056110.2).

Synonyms

BAMS; FSHD2; SMCHD1

Contact

 | 400-999-6126

 | cn.market@abclonal.com.cn

 | www.abclonal.com.cn

Product Information

Source

Rabbit

Isotype

IgG

Purification

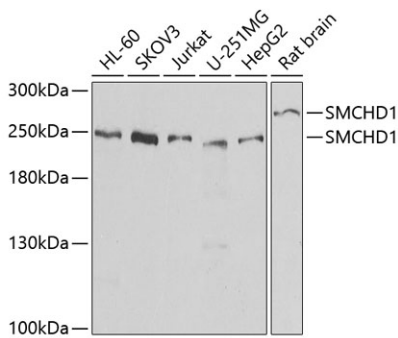
Affinity purification

Storage

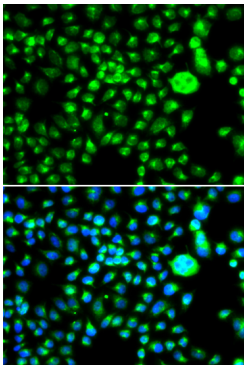
Store at -20°C. Avoid freeze / thaw cycles.

Buffer: PBS with 0.02% sodium azide, 50% glycerol, pH 7.3.

Validation Data



Western blot analysis of extracts of various cell lines, using SMCHD1 antibody (A7214) at 1:1000 dilution.
Secondary antibody: HRP Goat Anti-Rabbit IgG (H+L) (AS014) at 1:10000 dilution.
Lysates/proteins: 25µg per lane.
Blocking buffer: 3% nonfat dry milk in TBST.
Detection: ECL Basic Kit (RM00020).
Exposure time: 30s.



Immunofluorescence analysis of MCF-7 cells using SMCHD1 antibody (A7214). Blue: DAPI for nuclear staining.