

SLC35A2 Rabbit pAb

Catalog No.: A7233

Basic Information

Observed MW

Refer to figures

Calculated MW

41kDa

Category

Primary antibody

Applications

ELISA,IF/ICC

Cross-Reactivity

Human

Background

This gene encodes a member of the nucleotide-sugar transporter family. The encoded protein is a multi-pass membrane protein. It transports UDP-galactose from the cytosol into Golgi vesicles, where it serves as a glycosyl donor for the generation of glycans. Mutations in this gene cause congenital disorder of glycosylation type II_m (CDG2M). Multiple alternatively spliced transcript variants encoding distinct isoforms have been found for this gene.

Recommended Dilutions

IF/ICC 1:50 - 1:200

Immunogen Information

Gene ID

7355

Swiss Prot

P78381

Immunogen

Recombinant fusion protein containing a sequence corresponding to amino acids 1-242 of human SLC35A2 (NP_001027460.1).

Synonyms

UGT; CDGX; UGAT; UGT1; UGT2; UGTL; CDG2M; UGALT; UDP-Gal-Tr; SLC35A2

Contact

 | 400-999-6126

 | cn.market@abclonal.com.cn

 | www.abclonal.com.cn

Product Information

Source

Rabbit

Isotype

IgG

Purification

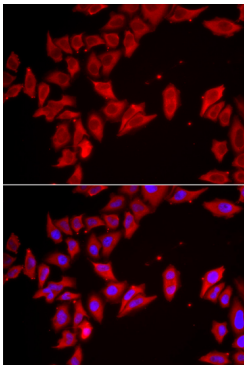
Affinity purification

Storage

Store at -20°C. Avoid freeze / thaw cycles.

Buffer: PBS with 0.02% sodium azide,50% glycerol,pH7.3.

Validation Data



Immunofluorescence analysis of HeLa cells using SLC35A2 antibody (A7233). Blue: DAPI for nuclear staining.