

# IGHMBP2 Rabbit pAb

Catalog No.: A7240

## Basic Information

### Observed MW

109kDa

### Calculated MW

109kDa

### Category

Primary antibody

### Applications

ELISA, WB

### Cross-Reactivity

Human, Mouse, Rat

## Background

Enables G-rich single-stranded DNA binding activity and ribosome binding activity. Acts upstream of or within negative regulation of transcription by RNA polymerase II; neuromuscular process; and spinal cord motor neuron differentiation. Located in several cellular components, including growth cone; neuronal cell body; and perinuclear region of cytoplasm. Part of ribonucleoprotein complex. Is expressed in several structures, including genitourinary system; heart; liver; lung; and nervous system. Used to study distal spinal muscular atrophy 1. Human ortholog(s) of this gene implicated in Charcot-Marie-Tooth disease axonal type 2S and distal spinal muscular atrophy 1. Orthologous to human IGHMBP2 (immunoglobulin mu DNA binding protein 2).

## Recommended Dilutions

WB 1:500 - 1:2000

## Immunogen Information

### Gene ID

20589

### Swiss Prot

### Immunogen

Recombinant protein of mouse IGHMBP2

### Synonyms

AEP; nmd; sma; Catf1; Smbp2; Smbp-2; Smubp2; RIPE3b1; IGHMBP2

## Contact

☎ | 400-999-6126

✉ | [cn.market@abclonal.com.cn](mailto:cn.market@abclonal.com.cn)

🌐 | [www.abclonal.com.cn](http://www.abclonal.com.cn)

## Product Information

### Source

Rabbit

### Isotype

IgG

### Purification

Affinity purification

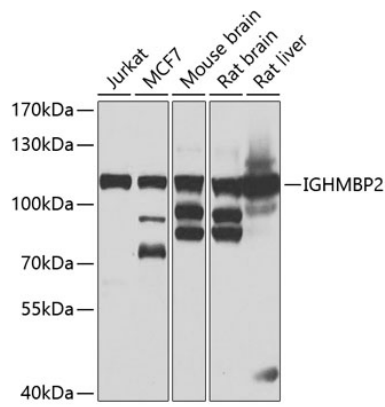
### Storage

Store at -20°C. Avoid freeze / thaw cycles.

Buffer: PBS with 0.02% sodium azide, 50% glycerol, pH7.3.

## Validation Data

---



Western blot analysis of extracts of various cell lines, using IGHMBP2 antibody (A7240) at 1:1000 dilution.  
Secondary antibody: HRP Goat Anti-Rabbit IgG (H+L) (AS014) at 1:10000 dilution.  
Lysates/proteins: 25 $\mu$ g per lane.  
Blocking buffer: 3% nonfat dry milk in TBST.  
Detection: ECL Basic Kit (RM00020).  
Exposure time: 10s.