

ATR Rabbit pAb

Catalog No.: A7247 **4 Publications**

Basic Information

Observed MW

301kDa

Calculated MW

301kDa

Category

Primary antibody

Applications

ELISA, WB

Cross-Reactivity

Human

Background

The protein encoded by this gene is a serine/threonine kinase and DNA damage sensor, activating cell cycle checkpoint signaling upon DNA stress. The encoded protein can phosphorylate and activate several proteins involved in the inhibition of DNA replication and mitosis, and can promote DNA repair, recombination, and apoptosis. This protein is also important for fragile site stability and centrosome duplication. Defects in this gene are a cause of Seckel syndrome 1.

Recommended Dilutions

WB 1:500 - 1:2000

Immunogen Information

Gene ID

545

Swiss Prot

Q13535

Immunogen

Recombinant fusion protein containing a sequence corresponding to amino acids 400-650 of human ATR (NP_001175.2).

Synonyms

FRP1; MEC1; SCKL; FCTCS; SCKL1; ATR

Contact

 | 400-999-6126

 | cn.market@abclonal.com.cn

 | www.abclonal.com.cn

Product Information

Source

Rabbit

Isotype

IgG

Purification

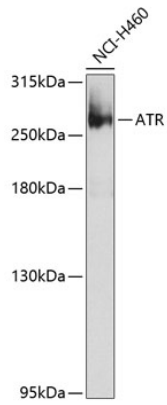
Affinity purification

Storage

Store at -20°C. Avoid freeze / thaw cycles.

Buffer: PBS with 0.02% sodium azide, 50% glycerol, pH 7.3.

Validation Data



Western blot analysis of extracts of NCI-H460 cells, using ATR Antibody (A7247) at 1:1000 dilution.
Secondary antibody: HRP Goat Anti-Rabbit IgG (H+L) (AS014) at 1:10000 dilution.
Lysates/proteins: 25µg per lane.
Blocking buffer: 3% nonfat dry milk in TBST.
Detection: ECL Basic Kit (RM00020).
Exposure time: 60s.