

# BLVRB Rabbit pAb

Catalog No.: A7260

## Basic Information

### Observed MW

22kDa

### Calculated MW

22kDa

### Category

Primary antibody

### Applications

ELISA, WB, IHC-P

### Cross-Reactivity

Human, Mouse, Rat

## Background

Enables biliverdin reductase (NAD(P)+) activity and riboflavin reductase (NADPH) activity. Involved in heme catabolic process. Located in cytosol; nucleoplasm; and plasma membrane.

## Recommended Dilutions

WB 1:500 - 1:2000

IHC-P 1:50 - 1:100

## Immunogen Information

### Gene ID

645

### Swiss Prot

P30043

### Immunogen

Recombinant fusion protein containing a sequence corresponding to amino acids 1-206 of human BLVRB (NP\_000704.1).

### Synonyms

FLR; BVRB; SDR43U1; HEL-S-10; BLVRB

## Contact

☎ | 400-999-6126

✉ | [cn.market@abclonal.com.cn](mailto:cn.market@abclonal.com.cn)

🌐 | [www.abclonal.com.cn](http://www.abclonal.com.cn)

## Product Information

### Source

Rabbit

### Isotype

IgG

### Purification

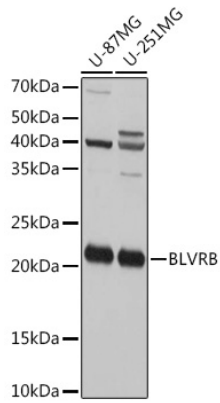
Affinity purification

### Storage

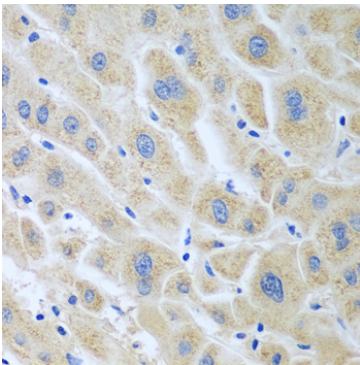
Store at -20°C. Avoid freeze / thaw cycles.

Buffer: PBS with 0.02% sodium azide, 50% glycerol, pH7.3.

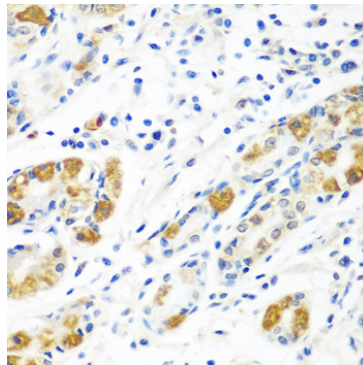
## Validation Data



Western blot analysis of various lysates using BLVRB Rabbit pAb (A7260) at 1:1000 dilution. Secondary antibody: HRP Goat Anti-Rabbit IgG (H+L) (AS014) at 1:10000 dilution. Lysates/proteins: 25µg per lane. Blocking buffer: 3% nonfat dry milk in TBST. Detection: ECL Basic Kit (RM00020). Exposure time: 30s.



Immunohistochemistry analysis of paraffin-embedded Human liver cancer using BLVRB Rabbit pAb (A7260) at dilution of 1:100 (40x lens). Perform microwave antigen retrieval with 10 mM PBS buffer pH 7.2 before commencing with IHC staining protocol.



Immunohistochemistry analysis of paraffin-embedded Human stomach using BLVRB Rabbit pAb (A7260) at dilution of 1:100 (40x lens). Perform microwave antigen retrieval with 10 mM PBS buffer pH 7.2 before commencing with IHC staining protocol.