

# ATMIN Rabbit pAb

Catalog No.: A7272

## Basic Information

### Observed MW

68-88kDa

### Calculated MW

88kDa

### Category

Primary antibody

### Applications

ELISA, WB, IF/ICC

### Cross-Reactivity

Human, Mouse, Rat

## Background

Enables dynein complex binding activity. Involved in positive regulation of transcription, DNA-templated. Located in nuclear body.

## Recommended Dilutions

WB 1:500 - 1:2000

IF/ICC 1:50 - 1:100

## Immunogen Information

### Gene ID

23300

### Swiss Prot

O43313

### Immunogen

Recombinant fusion protein containing a sequence corresponding to amino acids 160-360 of human ATMIN (NP\_056066.2).

### Synonyms

ASCIZ; ZNF822; ATMIN

## Contact

☎ | 400-999-6126

✉ | [cn.market@abclonal.com.cn](mailto:cn.market@abclonal.com.cn)

🌐 | [www.abclonal.com.cn](http://www.abclonal.com.cn)

## Product Information

### Source

Rabbit

### Isotype

IgG

### Purification

Affinity purification

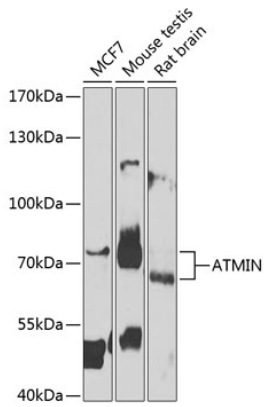
### Storage

Store at -20°C. Avoid freeze / thaw cycles.

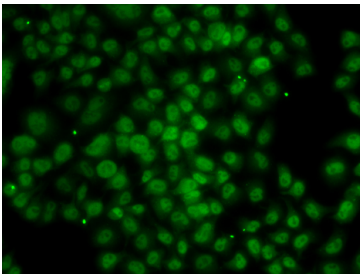
Buffer: PBS with 0.02% sodium azide, 50% glycerol, pH 7.3.

## Validation Data

---



Western blot analysis of extracts of various cell lines, using ATMIN antibody (A7272) at 1:1000 dilution. Secondary antibody: HRP Goat Anti-Rabbit IgG (H+L) (AS014) at 1:10000 dilution. Lysates/proteins: 25µg per lane. Blocking buffer: 3% nonfat dry milk in TBST. Detection: ECL Enhanced Kit (RM00021). Exposure time: 90s.



Immunofluorescence analysis of MCF-7 cells using ATMIN antibody (A7272).