

GCM1 Rabbit pAb

Catalog No.: A7282

Basic Information

Observed MW

Refer to figures

Calculated MW

49kDa

Category

Primary antibody

Applications

ELISA, WB, IF/ICC

Cross-Reactivity

Human

Background

This gene encodes a DNA-binding protein with a gcm-motif (glial cell missing motif). The encoded protein is a homolog of the Drosophila glial cells missing gene (gcm). This protein binds to the GCM-motif (A/G)CCCGCAT, a novel sequence among known targets of DNA-binding proteins. The N-terminal DNA-binding domain confers the unique DNA-binding activity of this protein.

Recommended Dilutions

WB 1:500 - 1:2000

IF/ICC 1:50 - 1:100

Immunogen Information

Gene ID

8521

Swiss Prot

Q9NP62

Immunogen

Recombinant fusion protein containing a sequence corresponding to amino acids 207-436 of human GCM1 (NP_003634.2).

Synonyms

GCMA; hGCMA; GCM1

Contact

☎ | 400-999-6126

✉ | cn.market@abclonal.com.cn

🌐 | www.abclonal.com.cn

Product Information

Source

Rabbit

Isotype

IgG

Purification

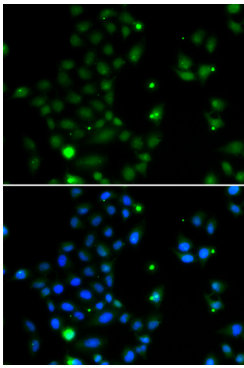
Affinity purification

Storage

Store at -20°C. Avoid freeze / thaw cycles.

Buffer: PBS with 0.02% sodium azide, 50% glycerol, pH7.3.

Validation Data



Immunofluorescence analysis of MCF-7 cells using GCM1 antibody (A7282). Blue: DAPI for nuclear staining.