

KMT5A/SETD8 Rabbit pAb

Catalog No.: A7305

1 Publications

Basic Information

Observed MW

43kDa

Calculated MW

43kDa

Category

Primary antibody

Applications

ELISA, WB, IF/ICC

Cross-Reactivity

Human, Mouse, Rat

Background

The protein encoded by this gene is a protein-lysine N-methyltransferase that can monomethylate Lys-20 of histone H4 to effect transcriptional repression of some genes. The encoded protein is required for cell proliferation and plays a role in chromatin condensation.

Recommended Dilutions

WB 1:500 - 1:2000

IF/ICC 1:50 - 1:100

Immunogen Information

Gene ID

387893

Swiss Prot

Q9NQR1

Immunogen

Recombinant fusion protein containing a sequence corresponding to amino acids 73-352 of human KMT5A/KMT5A/SETD8 (NP_065115.3).

Synonyms

SET8; SET07; SETD8; PR-Set7; PR/SET07; KMT5A/SETD8

Contact

☎ | 400-999-6126

✉ | cn.market@abclonal.com.cn

🌐 | www.abclonal.com.cn

Product Information

Source

Rabbit

Isotype

IgG

Purification

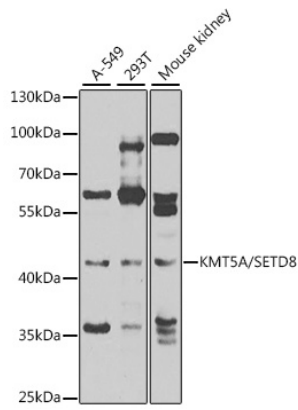
Affinity purification

Storage

Store at -20°C. Avoid freeze / thaw cycles.

Buffer: PBS with 0.02% sodium azide, 50% glycerol, pH7.3.

Validation Data



Western blot analysis of extracts of various cell lines, using KMT5A/KMT5A/SETD8 antibody (A7305) at 1:1000 dilution.

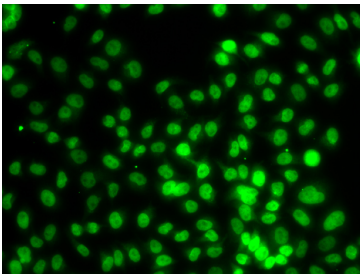
Secondary antibody: HRP Goat Anti-Rabbit IgG (H+L) (AS014) at 1:10000 dilution.

Lysates/proteins: 25µg per lane.

Blocking buffer: 3% nonfat dry milk in TBST.

Detection: ECL Enhanced Kit (RM00021).

Exposure time: 60s.



Immunofluorescence analysis of MCF-7 cells using KMT5A/KMT5A/SETD8 antibody (A7305).