

SMYD1 Rabbit pAb

Catalog No.: A7308

Basic Information

Observed MW

54kDa

Calculated MW

57kDa

Category

Primary antibody

Applications

ELISA, WB

Cross-Reactivity

Human, Mouse, Rat

Background

Predicted to enable histone-lysine N-methyltransferase activity. Involved in positive regulation of myoblast differentiation and positive regulation of myotube differentiation. Predicted to be located in cytoplasm. Predicted to be active in nucleus.

Recommended Dilutions

WB 1:500 - 1:2000

Immunogen Information

Gene ID

150572

Swiss Prot

Q8NB12

Immunogen

Recombinant fusion protein containing a sequence corresponding to amino acids 1-350 of human SMYD1 (NP_938015.1).

Synonyms

BOP; KMT3D; ZMYND18; ZMYND22; SMYD1

Contact

☎ | 400-999-6126

✉ | cn.market@abclonal.com.cn

🌐 | www.abclonal.com.cn

Product Information

Source

Rabbit

Isotype

IgG

Purification

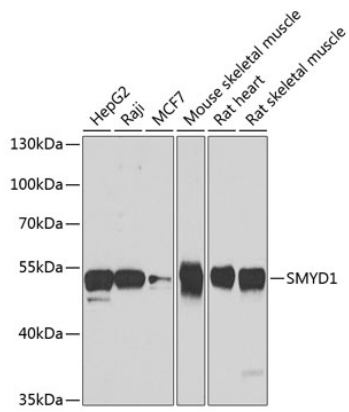
Affinity purification

Storage

Store at -20°C. Avoid freeze / thaw cycles.

Buffer: PBS with 0.02% sodium azide, 50% glycerol, pH 7.3.

Validation Data



Western blot analysis of extracts of various cell lines, using SMYD1 antibody (A7308) at 1:1000 dilution.
Secondary antibody: HRP Goat Anti-Rabbit IgG (H+L) (AS014) at 1:10000 dilution.
Lysates/proteins: 25µg per lane.
Blocking buffer: 3% nonfat dry milk in TBST.
Detection: ECL Basic Kit (RM00020).
Exposure time: 60s.