

# SMYD4 Rabbit pAb

Catalog No.: A7310

## Basic Information

### Observed MW

89kDa

### Calculated MW

89kDa

### Category

Primary antibody

### Applications

ELISA, WB, IHC-P, IF/ICC, IP

### Cross-Reactivity

Human, Mouse, Rat

## Background

Predicted to enable metal ion binding activity and methyltransferase activity. Involved in heart development. Predicted to be located in cytoplasm and nucleus.

## Recommended Dilutions

<b>WB</b>	1:1000 - 1:5000
<b>IHC-P</b>	1:50 - 1:200
<b>IF/ICC</b>	1:50 - 1:100
<b>IP</b>	0.5µg-4µg antibody for 200µg-400µg extracts of whole cells

## Contact

☎ | 400-999-6126

✉ | [cn.market@abclonal.com.cn](mailto:cn.market@abclonal.com.cn)

🌐 | [www.abclonal.com.cn](http://www.abclonal.com.cn)

## Immunogen Information

### Gene ID

114826

### Swiss Prot

Q8IYR2

### Immunogen

Recombinant fusion protein containing a sequence corresponding to amino acids 1-260 of human SMYD4 (NP\_443160.2).

### Synonyms

ZMYND21; SMYD4

## Product Information

### Source

Rabbit

### Isotype

IgG

### Purification

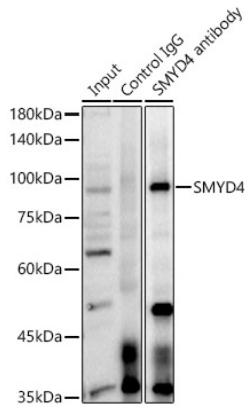
Affinity purification

### Storage

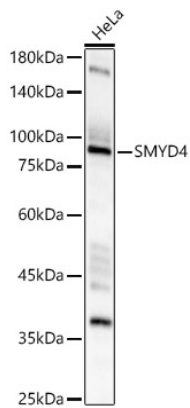
Store at -20°C. Avoid freeze / thaw cycles.

Buffer: PBS with 0.02% sodium azide, 50% glycerol, pH7.3.

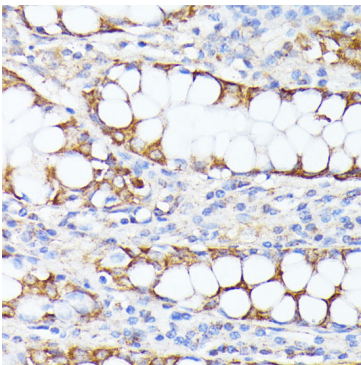
## Validation Data



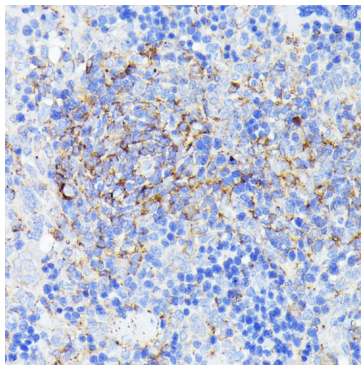
Immunoprecipitation analysis of 300ug extracts of HeLa cells using 3ug SMYD4 Rabbit pAb (A7310 1:2000). Western blot was performed from the immunoprecipitate using SMYD4 Rabbit pAb (A7310) at a dilution of 1:1000.



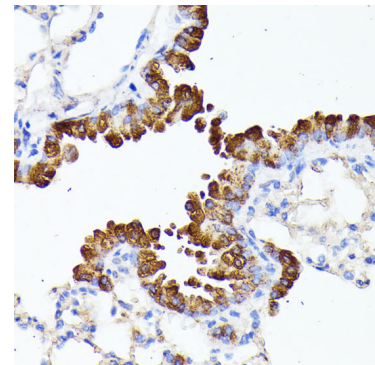
Western blot analysis of lysates from HeLa cells, using SMYD4 Rabbit pAb (A7310) at 1:2000 dilution. Secondary antibody: HRP Goat Anti-Rabbit IgG (H+L) (AS014) at 1:10000 dilution. Lysates/proteins: 25µg per lane. Blocking buffer: 3% nonfat dry milk in TBST. Detection: ECL Basic Kit (RM00020). Exposure time: 60s.



Immunohistochemistry analysis of paraffin-embedded Human colon carcinoma using SMYD4 Rabbit pAb (A7310) at dilution of 1:100 (40x lens). Perform microwave antigen retrieval with 10 mM PBS buffer pH 7.2 before commencing with IHC staining protocol.



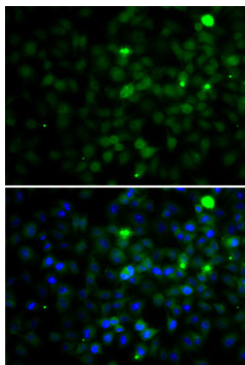
Immunohistochemistry analysis of paraffin-embedded Rat spleen using SMYD4 Rabbit pAb (A7310) at dilution of 1:100 (40x lens). Perform microwave antigen retrieval with 10 mM PBS buffer pH 7.2 before commencing with IHC staining protocol.



Immunohistochemistry analysis of paraffin-embedded Mouse lung using SMYD4 Rabbit pAb (A7310) at dilution of 1:100 (40x lens). Perform microwave antigen retrieval with 10 mM PBS buffer pH 7.2 before commencing with IHC staining protocol.

## Validation Data

---



Immunofluorescence analysis of A-549 cells using SMYD4 Rabbit pAb (A7310). Secondary antibody: Cy3 Goat Anti-Rabbit IgG (H+L) (AS007) at 1:500 dilution. Blue: DAPI for nuclear staining.