

ATG7 Rabbit pAb

Catalog No.: A7360 **1 Publications**

Basic Information

Observed MW

Calculated MW
78kDa

Category
Primary antibody

Applications
ELISA, IHC-P

Cross-Reactivity
Human

Background

This gene encodes an E1-like activating enzyme that is essential for autophagy and cytoplasmic to vacuole transport. The encoded protein is also thought to modulate p53-dependent cell cycle pathways during prolonged metabolic stress. It has been associated with multiple functions, including axon membrane trafficking, axonal homeostasis, mitophagy, adipose differentiation, and hematopoietic stem cell maintenance. Alternative splicing results in multiple transcript variants.

Recommended Dilutions

IHC-P 1:50 - 1:100

Immunogen Information

Gene ID 10533	Swiss Prot O95352
-------------------------	-----------------------------

Immunogen

Recombinant fusion protein containing a sequence corresponding to amino acids 500-676 of human ATG7 (NP_001129503.2).

Synonyms

GSA7; APG7L; SCAR31; APG7-LIKE; ATG7

Contact

☎	400-999-6126
✉	cn.market@abclonal.com.cn
🌐	www.abclonal.com.cn

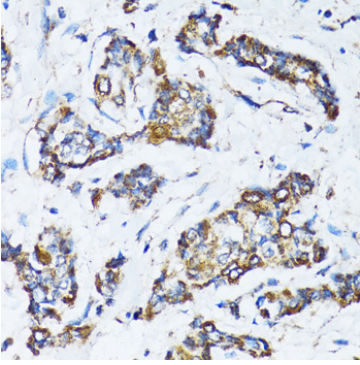
Product Information

Source Rabbit	Isotype IgG	Purification Affinity purification
-------------------------	-----------------------	--

Storage

Store at -20°C. Avoid freeze / thaw cycles.
Buffer: PBS with 0.02% sodium azide, 50% glycerol, pH 7.3.

Validation Data



Immunohistochemistry analysis of paraffin-embedded Human breast cancer using ATG7 Rabbit pAb (A7360) at dilution of 1:100 (40x lens). Perform microwave antigen retrieval with 10 mM PBS buffer pH 7.2 before commencing with IHC staining protocol.