

CAMK1G Rabbit pAb

Catalog No.: A7379

Basic Information

Observed MW

53kDa

Calculated MW

53kDa

Category

Primary antibody

Applications

WB, ELISA

Cross-Reactivity

Human, Mouse, Rat

Background

Predicted to enable calmodulin binding activity and calmodulin-dependent protein kinase activity. Predicted to be involved in peptidyl-serine phosphorylation. Predicted to be located in endomembrane system. Predicted to be part of calcium- and calmodulin-dependent protein kinase complex.

Recommended Dilutions

WB 1:500 - 1:2000

ELISA Recommended starting concentration is 1 µg/mL. Please optimize the concentration based on your specific assay requirements.

Immunogen Information

Gene ID

57172

Swiss Prot

Q96NX5

Immunogen

Recombinant protein (or fragment). This information is considered to be commercially sensitive.

Synonyms

VWS1; CLICK3; CLICKIII; dj272L16.1; CAMK1G

Contact

☎ | 400-999-6126

✉ | cn.market@abclonal.com.cn

🌐 | www.abclonal.com.cn

Product Information

Source

Rabbit

Isotype

IgG

Purification

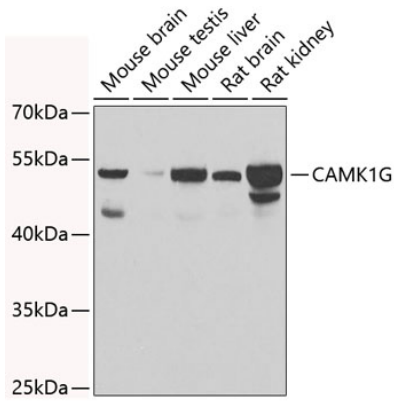
Affinity purification

Storage

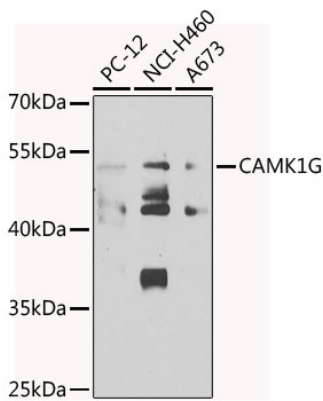
Store at -20°C. Avoid freeze / thaw cycles.

Buffer: PBS containing 50% glycerol, preserved with proclin300 or sodium azide (as specified on the Certificate of Analysis), pH 7.3.

Validation Data



Western blot analysis of various lysates using CAMK1G Rabbit pAb (A7379) at 1:1000 dilution. Secondary antibody: HRP-conjugated Goat anti-Rabbit IgG (H+L) (AS014) at 1:10000 dilution. Lysates/proteins: 25µg per lane. Blocking buffer: 3% nonfat dry milk in TBST. Detection: ECL Basic Kit (RM00020). Exposure time: 30s.



Western blot analysis of various lysates using CAMK1G Rabbit pAb (A7379) at 1:1000 dilution. Secondary antibody: HRP-conjugated Goat anti-Rabbit IgG (H+L) (AS014) at 1:10000 dilution. Lysates/proteins: 25µg per lane. Blocking buffer: 3% nonfat dry milk in TBST. Detection: ECL Basic Kit (RM00020). Exposure time: 90s.