

NAA40 Rabbit pAb

Catalog No.: A7385

Basic Information

Observed MW

27kDa

Calculated MW

27kDa

Category

Primary antibody

Applications

WB, ELISA

Cross-Reactivity

Human

Background

Enables H2A histone acetyltransferase activity; H4 histone acetyltransferase activity; and peptide-serine-N-acetyltransferase activity. Involved in N-terminal protein amino acid acetylation; histone H2A acetylation; and histone H4 acetylation. Located in centriolar satellite; cytosol; and nucleoplasm.

Recommended Dilutions

WB 1:500 - 1:1000

ELISA Recommended starting concentration is 1 µg/mL. Please optimize the concentration based on your specific assay requirements.

Immunogen Information

Gene ID

79829

Swiss Prot

Q86UY6

Immunogen

Recombinant protein (or fragment). This information is considered to be commercially sensitive.

Synonyms

NatD; NAT11; PATT1; hNatD; NAA40

Contact

☎ | 400-999-6126

✉ | cn.market@abclonal.com.cn

🌐 | www.abclonal.com.cn

Product Information

Source

Rabbit

Isotype

IgG

Purification

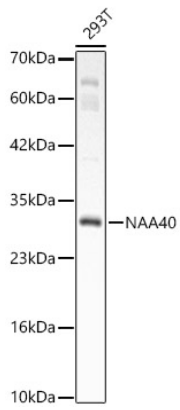
Affinity purification

Storage

Store at -20°C. Avoid freeze / thaw cycles.

Buffer: PBS containing 50% glycerol, preserved with proclin300 or sodium azide (as specified on the Certificate of Analysis), pH 7.3.

Validation Data



Western blot analysis of lysates from 293T cells, using NAA40 Rabbit pAb (A7385) at 1:1000 dilution.
Secondary antibody: HRP-conjugated Goat anti-Rabbit IgG (H+L) (AS014) at 1:10000 dilution.
Lysates/proteins: 25µg per lane.
Blocking buffer: 3% nonfat dry milk in TBST.
Detection: ECL Basic Kit (RM00020).
Exposure time: 180s.