

SPIN2B Rabbit pAb

Catalog No.: A7407

Basic Information

Observed MW

29kDa

Calculated MW

29kDa

Category

Primary antibody

Applications

WB, ELISA

Cross-Reactivity

Human, Mouse, Rat

Background

Enables methylated histone binding activity. Predicted to be involved in regulation of transcription, DNA-templated. Located in cytosol and nucleoplasm.

Recommended Dilutions

WB 1:500 - 1:2000

ELISA Recommended starting concentration is 1 µg/mL. Please optimize the concentration based on your specific assay requirements.

Immunogen Information

Gene ID

474343

Swiss Prot

Q9BPZ2

Immunogen

Recombinant protein (or fragment). This information is considered to be commercially sensitive.

Synonyms

SPIN-2; TDRD26; SPIN-2B; dj323P24.2; SPIN2_duplicate; SPIN2B

Contact

☎ | 400-999-6126

✉ | cn.market@abclonal.com.cn

🌐 | www.abclonal.com.cn

Product Information

Source

Rabbit

Isotype

IgG

Purification

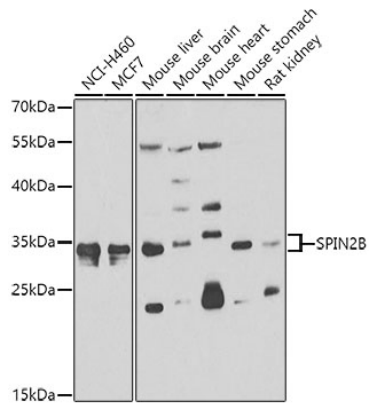
Affinity purification

Storage

Store at -20°C. Avoid freeze / thaw cycles.

Buffer: PBS containing 50% glycerol, preserved with proclin300 or sodium azide (as specified on the Certificate of Analysis), pH 7.3.

Validation Data



Western blot analysis of various lysates using SPIN2B Rabbit pAb (A7407) at 1:1000 dilution.
Secondary antibody: HRP-conjugated Goat anti-Rabbit IgG (H+L) (AS014) at 1:10000 dilution.
Lysates/proteins: 25 μ g per lane.
Blocking buffer: 3% nonfat dry milk in TBST.
Detection: ECL Enhanced Kit (RM00021).
Exposure time: 90s.