

SIRT6 Rabbit pAb

Catalog No.: A7416 **5 Publications**

Basic Information

Observed MW

39-45kDa

Calculated MW

39kDa

Category

Primary antibody

Applications

ELISA, WB

Cross-Reactivity

Human, Mouse

Background

Enables several functions, including NAD(P)⁺-protein-arginine ADP-ribosyltransferase activity; NAD-dependent histone deacetylase activity (H3-K9 specific); and transcription corepressor activity. Involved in several processes, including cellular protein modification process; negative regulation of nucleobase-containing compound metabolic process; and positive regulation of cell population proliferation. Located in nucleus. Is expressed in several structures, including alimentary system; central nervous system; gonad; musculature; and retina. Used to study progeria. Orthologous to human SIRT6 (sirtuin 6).

Recommended Dilutions

WB 1:500 - 1:2000

Immunogen Information

Gene ID

50721

Swiss Prot

Q8N6T7

Immunogen

A synthetic peptide corresponding to a sequence within amino acids 200-294 of mouse SIRT6 (NP_001156902.1).

Synonyms

Sir2l6; mSIRT6; 2810449N18Rik; SIRT6

Contact

☎ | 400-999-6126

✉ | cn.market@abclonal.com.cn

🌐 | www.abclonal.com.cn

Product Information

Source

Rabbit

Isotype

IgG

Purification

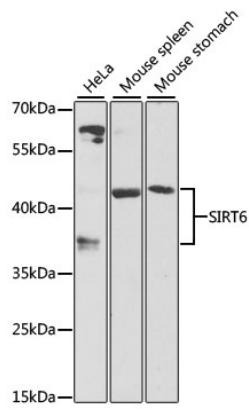
Affinity purification

Storage

Store at -20°C. Avoid freeze / thaw cycles.

Buffer: PBS with 0.02% sodium azide, 50% glycerol, pH7.3.

Validation Data



Western blot analysis of extracts of various cell lines, using SIRT6 antibody (A7416) at 1:1000 dilution.
Secondary antibody: HRP Goat Anti-Rabbit IgG (H+L) (AS014) at 1:10000 dilution.
Lysates/proteins: 25µg per lane.
Blocking buffer: 3% nonfat dry milk in TBST.
Detection: ECL Basic Kit (RM00020).
Exposure time: 30s.