

# CAPN5 Rabbit pAb

Catalog No.: A7428

## Basic Information

### Observed MW

73kDa

### Calculated MW

73kDa

### Category

Primary antibody

### Applications

ELISA, WB, IF/ICC

### Cross-Reactivity

Human, Mouse, Rat

## Background

Calpains are calcium-dependent cysteine proteases involved in signal transduction in a variety of cellular processes. A functional calpain protein consists of an invariant small subunit and 1 of a family of large subunits. CAPN5 is one of the large subunits. Unlike some of the calpains, CAPN5 and CAPN6 lack a calmodulin-like domain IV. Because of the significant similarity to *Caenorhabditis elegans* sex determination gene tra-3, CAPN5 is also called as HTRA3.

## Recommended Dilutions

WB 1:500 - 1:2000

IF/ICC 1:50 - 1:200

## Immunogen Information

### Gene ID

726

### Swiss Prot

O15484

### Immunogen

Recombinant fusion protein containing a sequence corresponding to amino acids 361-640 of human CAPN5 (NP\_004046.2).

### Synonyms

VRNI; ADNIV; HTRA3; nCL-3; CAPN5

## Contact

☎ | 400-999-6126

✉ | [cn.market@abclonal.com.cn](mailto:cn.market@abclonal.com.cn)

🌐 | [www.abclonal.com.cn](http://www.abclonal.com.cn)

## Product Information

### Source

Rabbit

### Isotype

IgG

### Purification

Affinity purification

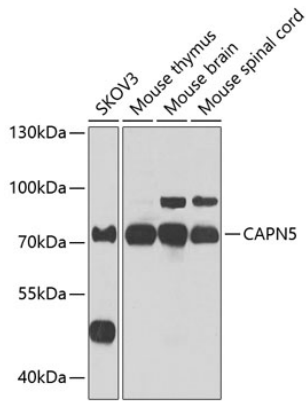
### Storage

Store at -20°C. Avoid freeze / thaw cycles.

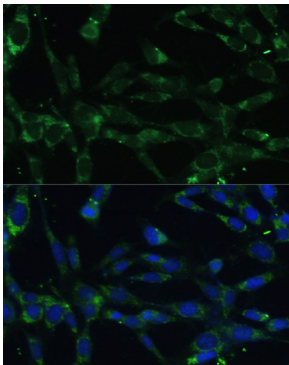
Buffer: PBS with 0.02% sodium azide, 50% glycerol, pH7.3.

## Validation Data

---



Western blot analysis of extracts of various cell lines, using CAPN5 antibody (A7428) at 1:1000 dilution.  
Secondary antibody: HRP Goat Anti-Rabbit IgG (H+L) (AS014) at 1:10000 dilution.  
Lysates/proteins: 25µg per lane.  
Blocking buffer: 3% nonfat dry milk in TBST.  
Detection: ECL Enhanced Kit (RM00021).  
Exposure time: 30s.



Immunofluorescence analysis of NIH-3T3 cells using CAPN5 antibody (A7428) at dilution of 1:100. Blue: DAPI for nuclear staining.