

# PPP3R2 Rabbit pAb

Catalog No.: A7495

## Basic Information

### Observed MW

16kDa

### Calculated MW

20kDa

### Category

Primary antibody

### Applications

ELISA, WB

### Cross-Reactivity

Human, Mouse, Rat

## Background

Predicted to enable calcium ion binding activity and calcium-dependent protein serine/threonine phosphatase regulator activity. Predicted to be involved in regulation of catalytic activity. Predicted to act upstream of or within penetration of zona pellucida. Predicted to be located in sperm mitochondrial sheath. Predicted to be part of calcineurin complex.

## Recommended Dilutions

WB 1:500 - 1:2000

## Immunogen Information

### Gene ID

5535

### Swiss Prot

Q96LZ3

### Immunogen

Recombinant fusion protein containing a sequence corresponding to amino acids 1-173 of human PPP3R2 (NP\_671709.1).

### Synonyms

PPP3RL; PPP3R2

## Contact

☎ | 400-999-6126

✉ | [cn.market@abclonal.com.cn](mailto:cn.market@abclonal.com.cn)

🌐 | [www.abclonal.com.cn](http://www.abclonal.com.cn)

## Product Information

### Source

Rabbit

### Isotype

IgG

### Purification

Affinity purification

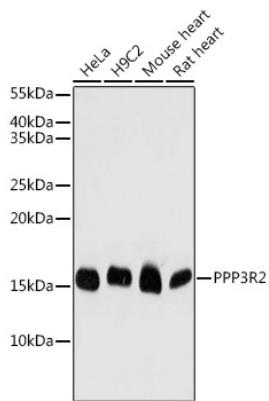
### Storage

Store at -20°C. Avoid freeze / thaw cycles.

Buffer: PBS with 0.02% sodium azide, 50% glycerol, pH 7.3.

## Validation Data

---



Western blot analysis of extracts of various cell lines, using PPP3R2 antibody (A7495) at 1:1000 dilution.  
Secondary antibody: HRP Goat Anti-Rabbit IgG (H+L) (AS014) at 1:10000 dilution.  
Lysates/proteins: 25µg per lane.  
Blocking buffer: 3% nonfat dry milk in TBST.  
Detection: ECL Basic Kit (RM00020).  
Exposure time: 180s.