

Smad9 Rabbit pAb

Catalog No.: A7518

Basic Information

Observed MW

45-52kDa

Calculated MW

52kDa

Category

Primary antibody

Applications

ELISA, IHC-P

Cross-Reactivity

Human, Mouse, Rat

Background

The protein encoded by this gene is a member of the SMAD family, which transduces signals from TGF-beta family members. The encoded protein is activated by bone morphogenetic proteins and interacts with SMAD4. Two transcript variants encoding different isoforms have been found for this gene.

Recommended Dilutions

IHC-P 1:50 - 1:200

Immunogen Information

Gene ID

4093

Swiss Prot

O15198

Immunogen

Recombinant fusion protein containing a sequence corresponding to amino acids 1-300 of human Smad9 (NP_005896.1).

Synonyms

PPH2; MADH6; MADH9; SMAD8; SMAD8A; SMAD8B; SMAD8/9; Smad9

Contact

 | 400-999-6126

 | cn.market@abclonal.com.cn

 | www.abclonal.com.cn

Product Information

Source

Rabbit

Isotype

IgG

Purification

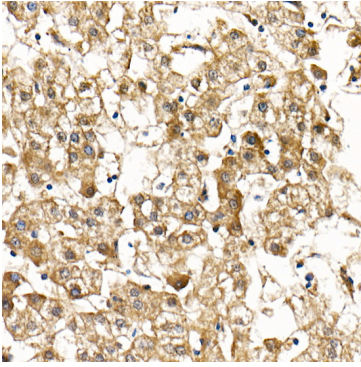
Affinity purification

Storage

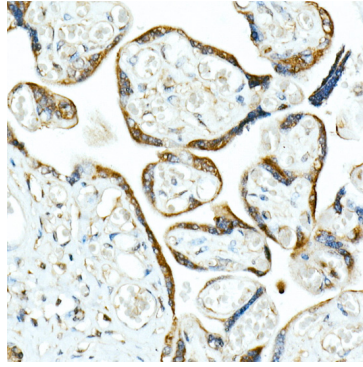
Store at -20°C. Avoid freeze / thaw cycles.

Buffer: PBS with 0.05% proclin300, 50% glycerol, pH7.3.

Validation Data



Immunohistochemistry analysis of paraffin-embedded Human liver cancer using Smad9 Rabbit pAb (A7518) at dilution of 1:100 (40x lens). Perform high pressure antigen retrieval with 10 mM citrate buffer pH 6.0 before commencing with IHC staining protocol.



Immunohistochemistry analysis of paraffin-embedded Human placenta using Smad9 Rabbit pAb (A7518) at dilution of 1:100 (40x lens). Perform high pressure antigen retrieval with 10 mM citrate buffer pH 6.0 before commencing with IHC staining protocol.