

DVL2 Rabbit pAb

Catalog No.: A7551

Basic Information

Observed MW

Refer to figures

Calculated MW

79kDa

Category

Primary antibody

Applications

ELISA,IF/ICC

Cross-Reactivity

Mouse

Background

This gene encodes a member of the dishevelled (dsh) protein family. The vertebrate dsh proteins have approximately 40% amino acid sequence similarity with *Drosophila* dsh. This gene encodes a 90-kD protein that undergoes posttranslational phosphorylation to form a 95-kD cytoplasmic protein, which may play a role in the signal transduction pathway mediated by multiple Wnt proteins. The mechanisms of dishevelled function in Wnt signaling are likely to be conserved among metazoans.

Recommended Dilutions

IF/ICC 1:50 - 1:200

Immunogen Information

Gene ID

1856

Swiss Prot

O14641

Immunogen

Recombinant fusion protein containing a sequence corresponding to amino acids 600-700 of human DVL2 (NP_004413.1).

Synonyms

DVL2

Contact

☎ | 400-999-6126

✉ | cn.market@abclonal.com.cn

🌐 | www.abclonal.com.cn

Product Information

Source

Rabbit

Isotype

IgG

Purification

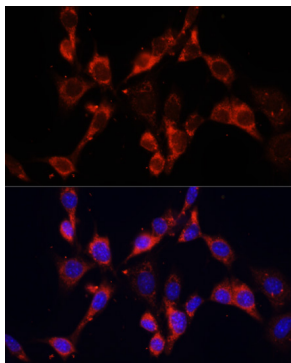
Affinity purification

Storage

Store at -20°C. Avoid freeze / thaw cycles.

Buffer: PBS with 0.02% sodium azide,50% glycerol,pH7.3.

Validation Data



Immunofluorescence analysis of NIH/3T3 cells using DVL2 antibody (A7551) at dilution of 1:100. Blue: DAPI for nuclear staining.