

EIF4G1 Rabbit pAb

Catalog No.: A7552 **1 Publications**

Basic Information

Observed MW

220kDa

Calculated MW

175kDa

Category

Primary antibody

Applications

ELISA, WB, IHC-P, IP

Cross-Reactivity

Human

Background

The protein encoded by this gene is a component of the multi-subunit protein complex EIF4F. This complex facilitates the recruitment of mRNA to the ribosome, which is a rate-limiting step during the initiation phase of protein synthesis. The recognition of the mRNA cap and the ATP-dependent unwinding of 5'-terminal secondary structure is catalyzed by factors in this complex. The subunit encoded by this gene is a large scaffolding protein that contains binding sites for other members of the EIF4F complex. A domain at its N-terminus can also interact with the poly(A)-binding protein, which may mediate the circularization of mRNA during translation. Alternative splicing results in multiple transcript variants, some of which are derived from alternative promoter usage.

Recommended Dilutions

WB 1:100 - 1:500**IHC-P** 1:50 - 1:200**IP** 0.5µg-4µg antibody for
200µg-400µg extracts of
whole cells

Immunogen Information

Gene ID

1981

Swiss Prot

Q04637

Immunogen

A synthetic peptide corresponding to a sequence within amino acids 400-500 of human EIF4G1 (NP_886553.3).

Synonyms

P220; EIF4F; EIF4G; EIF4GI; PARK18; EIF-4G1; EIF4G1

Contact

 | 400-999-6126 | cn.market@abclonal.com.cn | www.abclonal.com.cn

Product Information

Source

Rabbit

Isotype

IgG

Purification

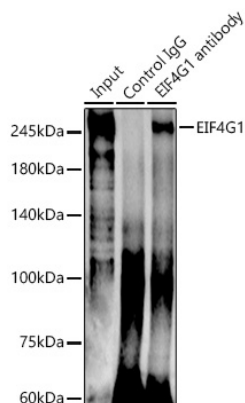
Affinity purification

Storage

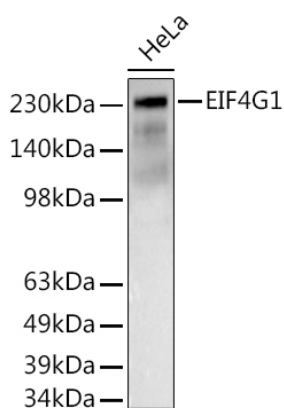
Store at -20°C. Avoid freeze / thaw cycles.

Buffer: PBS with 0.02% sodium azide, 50% glycerol, pH7.3.

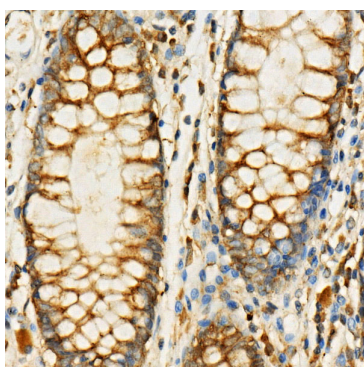
Validation Data



Immunoprecipitation analysis of 300 μ g extracts of HeLa cells using 3 μ g EIF4G1 antibody (A7552). Western blot was performed from the immunoprecipitate using EIF4G1 antibody (A7552) at a dilution of 1:500.



Western blot analysis of lysates from HeLa cells, using EIF4G1 Rabbit pAb (A7552) at 1:500 dilution. Secondary antibody: HRP Goat Anti-Rabbit IgG (H+L) (AS014) at 1:10000 dilution. Lysates/proteins: 25 μ g per lane. Blocking buffer: 3% nonfat dry milk in TBST. Detection: ECL Basic Kit (RM00020). Exposure time: 180s.



Immunohistochemistry analysis of paraffin-embedded Human colon carcinoma using EIF4G1 Rabbit pAb (A7552) at dilution of 1:100 (40x lens). Perform high pressure antigen retrieval with 10 mM citrate buffer pH 6.0 before commencing with IHC staining protocol.