

CCL3 Rabbit pAb

Catalog No.: A7568 **6 Publications**

Basic Information

Observed MW

11kDa

Calculated MW

10kDa

Category

Primary antibody

Applications

ELISA, WB

Cross-Reactivity

Human, Mouse, Rat

Background

This locus represents a small inducible cytokine. The encoded protein, also known as macrophage inflammatory protein 1 alpha, plays a role in inflammatory responses through binding to the receptors CCR1, CCR4 and CCR5. Polymorphisms at this locus may be associated with both resistance and susceptibility to infection by human immunodeficiency virus type 1.

Recommended Dilutions

WB 1:500 - 1:1000

Immunogen Information

Gene ID

6348

Swiss Prot

P10147

Immunogen

A synthetic peptide corresponding to a sequence within amino acids 24-92 of human CCL3 (NP_002974.1).

Synonyms

MIP1A; SCYA3; G0S19-1; LD78ALPHA; MIP-1-alpha; CCL3

Contact

 | 400-999-6126

 | cn.market@abclonal.com.cn

 | www.abclonal.com.cn

Product Information

Source

Rabbit

Isotype

IgG

Purification

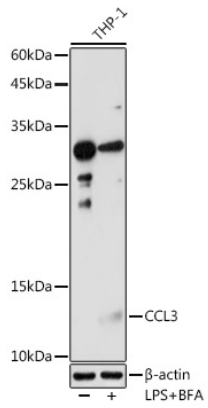
Affinity purification

Storage

Store at -20°C. Avoid freeze / thaw cycles.

Buffer: PBS with 0.01% thimerosal, 50% glycerol, pH7.3.

Validation Data



Western blot analysis of lysates from THP-1 cells, using CCL3 Rabbit pAb (A7568) at 1:1000 dilution. THP-1 cells were treated by LPS for 6 hours and Brefeldin A for 3 hours of stimulation. Secondary antibody: HRP Goat Anti-Rabbit IgG (H+L) (AS014) at 1:10000 dilution. Lysates/proteins: 25µg per lane. Blocking buffer: 3% nonfat dry milk in TBST. Detection: ECL Enhanced Kit (RM00021). Exposure time: 180s.