

ZCWPW1 Rabbit pAb

Catalog No.: A7596

1 Publications

Basic Information

Observed MW

72kDa

Calculated MW

72kDa

Category

Primary antibody

Applications

ELISA, WB

Cross-Reactivity

Human, Mouse

Background

Enables methyl-CpG binding activity and methylated histone binding activity. Predicted to be involved in meiosis I; positive regulation of DNA metabolic process; and spermatogenesis. Predicted to act upstream of or within homologous chromosome pairing at meiosis. Predicted to be located in XY body. Predicted to be active in nucleus.

Recommended Dilutions

WB 1:500 - 1:2000

Immunogen Information

Gene ID

55063

Swiss Prot

Q9H0M4

Immunogen

Recombinant fusion protein containing a sequence corresponding to amino acids 389-648 of human ZCWPW1 (NP_060454.3).

Synonyms

ZCW1; ZCWPW1

Contact

☎ | 400-999-6126

✉ | cn.market@abclonal.com.cn

🌐 | www.abclonal.com.cn

Product Information

Source

Rabbit

Isotype

IgG

Purification

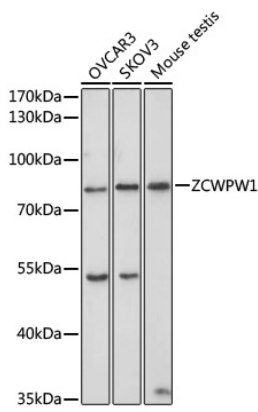
Affinity purification

Storage

Store at -20°C. Avoid freeze / thaw cycles.

Buffer: PBS with 0.02% sodium azide, 50% glycerol, pH7.3.

Validation Data



Western blot analysis of extracts of various cell lines, using ZCWPW1 antibody (A7596) at 1:1000 dilution.
Secondary antibody: HRP Goat Anti-Rabbit IgG (H+L) (AS014) at 1:10000 dilution.
Lysates/proteins: 25µg per lane.
Blocking buffer: 3% nonfat dry milk in TBST.
Detection: ECL Basic Kit (RM00020).
Exposure time: 30s.