

# FANCM Rabbit pAb

Catalog No.: A7602

## Basic Information

### Observed MW

Refer to figures

### Calculated MW

232kDa

### Category

Primary antibody

### Applications

ELISA,WB,IF/ICC

### Cross-Reactivity

Human

## Background

The Fanconi anemia complementation group (FANC) currently includes FANCA, FANCB, FANCC, FANCD1 (also called BRCA2), FANCD2, FANCE, FANCF, FANCG, FANCI, FANCI, FANCI, FANCI (also called BRIP1), FANCL, FANCM and FANCN (also called PALB2). The previously defined group FANCI is the same as FANCA. Fanconi anemia is a genetically heterogeneous recessive disorder characterized by cytogenetic instability, hypersensitivity to DNA crosslinking agents, increased chromosomal breakage, and defective DNA repair. The members of the Fanconi anemia complementation group do not share sequence similarity; they are related by their assembly into a common nuclear protein complex. This gene encodes the protein for complementation group M. Alternative splicing results in multiple transcript variants.

## Recommended Dilutions

WB	1:500 - 1:2000
IF/ICC	1:50 - 1:100

## Immunogen Information

### Gene ID

57697

### Swiss Prot

Q8IYD8

### Immunogen

Recombinant fusion protein containing a sequence corresponding to amino acids 390-660 of human FANCM (NP\_065988.1).

### Synonyms

POF15; SPGF28; FAAP250; KIAA1596; FANCM

## Contact

☎	400-999-6126
✉	cn.market@abclonal.com.cn
🌐	www.abclonal.com.cn

## Product Information

### Source

Rabbit

### Isotype

IgG

### Purification

Affinity purification

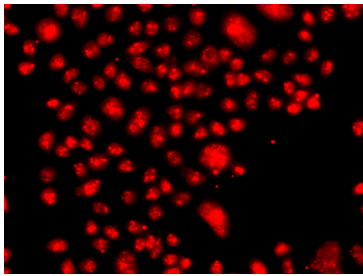
### Storage

Store at -20°C. Avoid freeze / thaw cycles.

Buffer: PBS with 0.02% sodium azide,50% glycerol,pH7.3.

## Validation Data

---



Immunofluorescence analysis of A549 cells using FANCM antibody (A7602).