

KIF6 Rabbit pAb

Catalog No.: A7614

Basic Information

Observed MW

93kDa

Calculated MW

93kDa

Category

Primary antibody

Applications

ELISA, WB

Cross-Reactivity

Human, Mouse

Background

This gene encodes a member of a family of molecular motors which are involved in intracellular transport of protein complexes, membrane organelles, and messenger ribonucleic acid along microtubules. Kinesins function as homodimeric molecules with two N-terminal head domains that move along microtubules and two C-terminal tail domains that interact with the transported cargo, either directly or indirectly, through adapter molecules. This gene is ubiquitously expressed in coronary arteries and other vascular tissue. A naturally occurring mutation in this gene is associated with coronary heart disease.

Recommended Dilutions

WB 1:500 - 1:2000

Immunogen Information

Gene ID

221458

Swiss Prot

Q6ZMV9

Immunogen

Recombinant fusion protein containing a sequence corresponding to amino acids 565-814 of human KIF6 (NP_659464.3).

Synonyms

C6orf102; dj137F1.4; dj188D3.1; dj1043E3.1; KIF6

Contact

☎ | 400-999-6126

✉ | cn.market@abclonal.com.cn

🌐 | www.abclonal.com.cn

Product Information

Source

Rabbit

Isotype

IgG

Purification

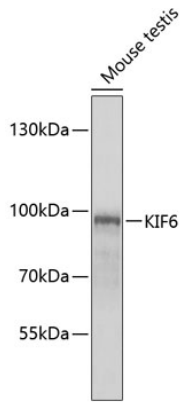
Affinity purification

Storage

Store at -20°C. Avoid freeze / thaw cycles.

Buffer: PBS with 0.02% sodium azide, 50% glycerol, pH7.3.

Validation Data



Western blot analysis of extracts of mouse testis, using KIF6 antibody (A7614) at 1:1000 dilution.
Secondary antibody: HRP Goat Anti-Rabbit IgG (H+L) (AS014) at 1:10000 dilution.
Lysates/proteins: 25µg per lane.
Blocking buffer: 3% nonfat dry milk in TBST.
Detection: ECL Basic Kit (RM00020).
Exposure time: 90s.