

BCS1L Rabbit pAb

Catalog No.: A7647

Basic Information

Observed MW

48kDa

Calculated MW

48kDa

Category

Primary antibody

Applications

WB,IHC-P,IF/ICC,ELISA

Cross-Reactivity

Human, Mouse, Rat

Background

This gene encodes a homolog of the *S. cerevisiae* bcs1 protein which is involved in the assembly of complex III of the mitochondrial respiratory chain. The encoded protein does not contain a mitochondrial targeting sequence but experimental studies confirm that it is imported into mitochondria. Mutations in this gene are associated with mitochondrial complex III deficiency and the GRACILE syndrome. Several alternatively spliced transcripts encoding two different isoforms have been described.

Recommended Dilutions

WB	1:500 - 1:2000
IHC-P	1:50 - 1:200
IF/ICC	1:50 - 1:200
ELISA	Recommended starting concentration is 1 µg/mL. Please optimize the concentration based on your specific assay requirements.

Contact

	400-999-6126
	cn.market@abclonal.com.cn
	www.abclonal.com.cn

Immunogen Information

Gene ID

617

Swiss Prot

Q9Y276

Immunogen

Recombinant protein (or fragment). This information is considered to be commercially sensitive.

Synonyms

BCS; BJS; PTD; BCS1; FLNMS; h-BCS; MC3DN1; h-BCS1; GRACILE; Hs.6719; BCS1L

Product Information

Source

Rabbit

Isotype

IgG

Purification

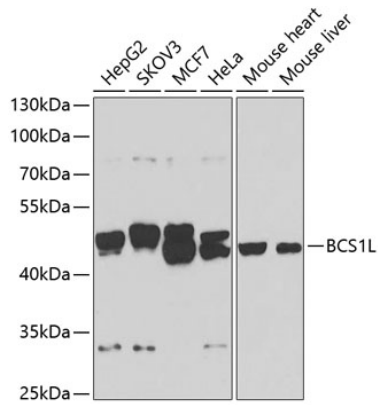
Affinity purification

Storage

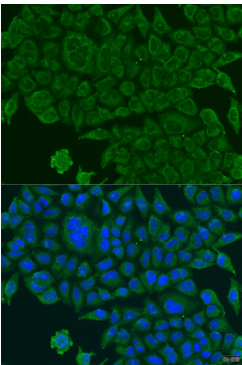
Store at -20°C. Avoid freeze / thaw cycles.

Buffer: PBS containing 50% glycerol, preserved with proclin300 or sodium azide (as specified on the Certificate of Analysis), pH 7.3.

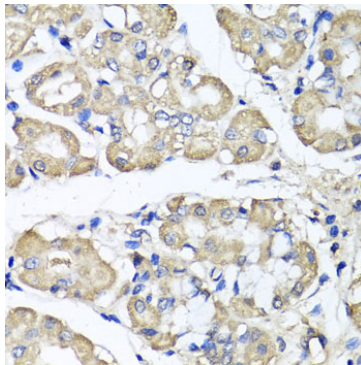
Validation Data



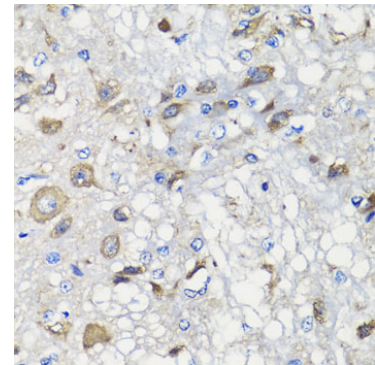
Western blot analysis of various lysates using BCS1L Rabbit pAb (A7647) at 1:1000 dilution. Secondary antibody: HRP-conjugated Goat anti-Rabbit IgG (H+L) (AS014) at 1:10000 dilution. Lysates/proteins: 25µg per lane. Blocking buffer: 3% nonfat dry milk in TBST. Detection: ECL Basic Kit (RM00020). Exposure time: 30s.



Immunofluorescence analysis of U2OS cells using BCS1L Rabbit pAb (A7647) at dilution of 1:100. Secondary antibody: Cy3-conjugated Goat anti-Rabbit IgG (H+L) (AS007) at 1:500 dilution. Blue: DAPI for nuclear staining.



Immunohistochemistry analysis of paraffin-embedded Human stomach using BCS1L Rabbit pAb (A7647) at dilution of 1:100 (40x lens). Microwave antigen retrieval performed with 0.01M PBS Buffer (pH 7.2) prior to IHC staining.



Immunohistochemistry analysis of paraffin-embedded Rat brain using BCS1L Rabbit pAb (A7647) at dilution of 1:100 (40x lens). Microwave antigen retrieval performed with 0.01M PBS Buffer (pH 7.2) prior to IHC staining.