

IGSF3 Rabbit pAb

Catalog No.: A7689

Basic Information

Observed MW

125kDa

Calculated MW

135kDa

Category

Primary antibody

Applications

ELISA, WB

Cross-Reactivity

Human

Background

The protein encoded by this gene is an immunoglobulin-like membrane protein containing several V-type Ig-like domains. A mutation in this gene has been associated with bilateral nasolacrimal duct obstruction (LCDD).

Recommended Dilutions

WB 1:500 - 1:2000

Immunogen Information

Gene ID

3321

Swiss Prot

O75054

Immunogen

Recombinant fusion protein containing a sequence corresponding to amino acids 350-562 of human IGSF3 (NP_001007238.1).

Synonyms

V8; LCDD; EWI-3; IGSF3

Contact

☎ | 400-999-6126

✉ | cn.market@abclonal.com.cn

🌐 | www.abclonal.com.cn

Product Information

Source

Rabbit

Isotype

IgG

Purification

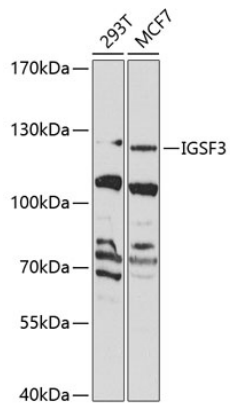
Affinity purification

Storage

Store at -20°C. Avoid freeze / thaw cycles.

Buffer: PBS with 0.02% sodium azide, 50% glycerol, pH7.3.

Validation Data



Western blot analysis of extracts of various cell lines, using IGSF3 Antibody (A7689) at 1:1000 dilution.
Secondary antibody: HRP Goat Anti-Rabbit IgG (H+L) (AS014) at 1:10000 dilution.
Lysates/proteins: 25µg per lane.
Blocking buffer: 3% nonfat dry milk in TBST.
Detection: ECL Basic Kit (RM00020).
Exposure time: 90s.