

# SLC4A2 Rabbit pAb

Catalog No.: A7729 **1 Publications**

## Basic Information

### Observed MW

140kDa

### Calculated MW

137kDa

### Category

Primary antibody

### Applications

ELISA, WB

### Cross-Reactivity

Human

## Background

This gene encodes a member of the anion exchanger family of membrane transport proteins. The encoded protein regulates intracellular pH, biliary bicarbonate secretion, and chloride uptake. Reduced expression of this gene may be associated with primary biliary cirrhosis (PBC) in human patients, while differential expression of this gene may be associated with malignant hepatocellular carcinoma, colon and gastric cancers.

## Recommended Dilutions

WB 1:500 - 1:2000

## Immunogen Information

### Gene ID

6522

### Swiss Prot

P04920

### Immunogen

Recombinant fusion protein containing a sequence corresponding to amino acids 200-300 of human SLC4A2 (NP\_001186623.1).

### Synonyms

AE2; HKB3; BND3L; NBND3; EPB3L1; SLC4A2

## Contact

 | 400-999-6126

 | [cn.market@abclonal.com.cn](mailto:cn.market@abclonal.com.cn)

 | [www.abclonal.com.cn](http://www.abclonal.com.cn)

## Product Information

### Source

Rabbit

### Isotype

IgG

### Purification

Affinity purification

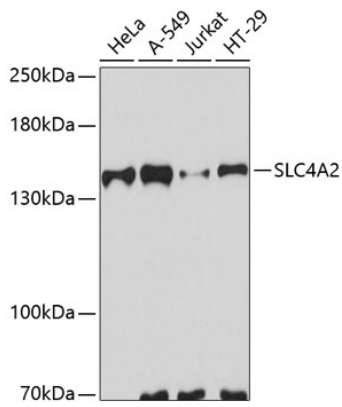
### Storage

Store at -20°C. Avoid freeze / thaw cycles.

Buffer: PBS with 0.01% thimerosal, 50% glycerol, pH7.3.

## Validation Data

---



Western blot analysis of various lysates using SLC4A2 Rabbit pAb (A7729) at 1:3000 dilution.  
Secondary antibody: HRP Goat Anti-Rabbit IgG (H+L) (AS014) at 1:10000 dilution.  
Lysates/proteins: 25µg per lane.  
Blocking buffer: 3% nonfat dry milk in TBST.  
Detection: ECL Basic Kit (RM00020).  
Exposure time: 30s.