

RRAGA Rabbit pAb

Catalog No.: A7771

Basic Information

Observed MW

33kDa

Calculated MW

37kDa

Category

Primary antibody

Applications

ELISA, WB, IF/ICC

Cross-Reactivity

Human, Mouse, Rat

Background

Enables several functions, including GTP binding activity; protein dimerization activity; and ubiquitin protein ligase binding activity. Involved in several processes, including cellular response to amino acid starvation; negative regulation of autophagy; and positive regulation of TORC1 signaling. Located in lysosome and nucleus. Colocalizes with GATOR1 complex.

Recommended Dilutions

WB 1:500 - 1:1000

IF/ICC 1:50 - 1:200

Immunogen Information

Gene ID

10670

Swiss Prot

Q7L523

Immunogen

A synthetic peptide corresponding to a sequence within amino acids 213-313 of human RRAGA (NP_006561.1).

Synonyms

FIP1; RAGA; FIP-1; RRAGA

Contact

☎ | 400-999-6126

✉ | cn.market@abclonal.com.cn

🌐 | www.abclonal.com.cn

Product Information

Source

Rabbit

Isotype

IgG

Purification

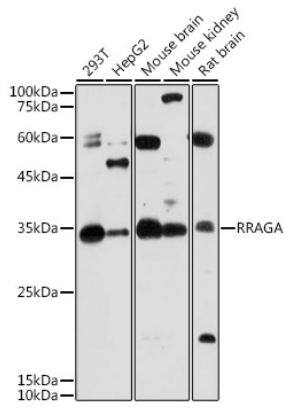
Affinity purification

Storage

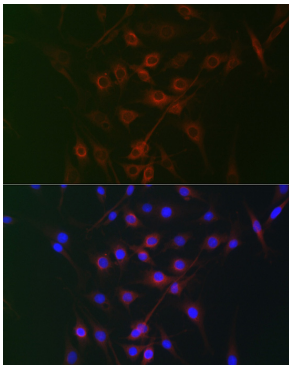
Store at -20°C. Avoid freeze / thaw cycles.

Buffer: PBS with 0.01% thimerosal, 50% glycerol, pH7.3.

Validation Data



Western blot analysis of extracts of various cell lines, using RRAGA antibody (A7771) at 1:1000 dilution.
Secondary antibody: HRP Goat Anti-Rabbit IgG (H+L) (AS014) at 1:10000 dilution.
Lysates/proteins: 25µg per lane.
Blocking buffer: 3% nonfat dry milk in TBST.
Detection: ECL Basic Kit (RM00020).
Exposure time: 60s.



Immunofluorescence analysis of C6 cells using RRAGA Rabbit pAb (A7771) at dilution of 1:100 (40x lens). Blue: DAPI for nuclear staining.