

[KO Validated] KDM5B Rabbit pAb

Catalog No.: A7772 **KO Validated** **1 Publications**

Basic Information

Observed MW

176kDa

Calculated MW

176kDa

Category

Primary antibody

Applications

ELISA, WB, IF/ICC

Cross-Reactivity

Human, Mouse

Background

This gene encodes a lysine-specific histone demethylase that belongs to the jumonji/ARID domain-containing family of histone demethylases. The encoded protein is capable of demethylating tri-, di- and monomethylated lysine 4 of histone H3. This protein plays a role in the transcriptional repression of certain tumor suppressor genes and is upregulated in certain cancer cells. This protein may also play a role in genome stability and DNA repair. Alternate splicing results in multiple transcript variants.

Recommended Dilutions

WB	1:500 - 1:1000
IF/ICC	1:50 - 1:200

Immunogen Information

Gene ID

10765

Swiss Prot

Q9UGL1

Immunogen

Recombinant fusion protein containing a sequence corresponding to amino acids 784-883 of human KDM5B (NP_006609.3).

Synonyms

CT31; PLU1; PUT1; MRT65; PLU-1; JARID1B; PPP1R98; RBP2-H1; RBBP2H1A; 5B

Contact

☎ | 400-999-6126

✉ | cn.market@abclonal.com.cn

🌐 | www.abclonal.com.cn

Product Information

Source

Rabbit

Isotype

IgG

Purification

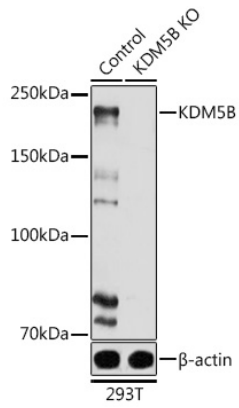
Affinity purification

Storage

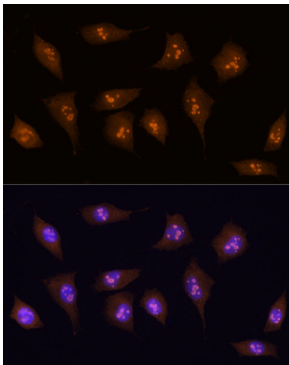
Store at -20°C. Avoid freeze / thaw cycles.

Buffer: PBS with 0.02% sodium azide, 50% glycerol, pH7.3.

Validation Data



Western blot analysis of extracts from normal (control) and KDM5B knockout (KO) 293T cells, using KDM5B antibody (A7772) at 1:1000 dilution.
Secondary antibody: HRP Goat Anti-Rabbit IgG (H+L) (AS014) at 1:10000 dilution.
Lysates/proteins: 25µg per lane.
Blocking buffer: 3% nonfat dry milk in TBST.
Detection: ECL Basic Kit (RM00020).
Exposure time: 10s.



Immunofluorescence analysis of L929 using KDM5B antibody (A7772) at dilution of 1:100 (40x lens). Blue: DAPI for nuclear staining.