

CKAP4 Rabbit pAb

Catalog No.: A7777 **1 Publications**

Basic Information

Observed MW

66kDa

Calculated MW

66kDa

Category

Primary antibody

Applications

WB,IF/ICC,ELISA

Cross-Reactivity

Human, Mouse, Rat

Background

Enables RNA binding activity. Located in several cellular components, including lipid droplet; nuclear speck; and rough endoplasmic reticulum.

Recommended Dilutions

WB 1:500 - 1:2000

IF/ICC 1:50 - 1:100

ELISA Recommended starting concentration is 1 µg/mL. Please optimize the concentration based on your specific assay requirements.

Immunogen Information

Gene ID

10970

Swiss Prot

Q07065

Immunogen

Recombinant protein (or fragment). This information is considered to be commercially sensitive.

Synonyms

p63; CLIMP63; CLIMP-63; ERGIC-63; CKAP4

Contact

 | 400-999-6126

 | cn.market@abclonal.com.cn

 | www.abclonal.com.cn

Product Information

Source

Rabbit

Isotype

IgG

Purification

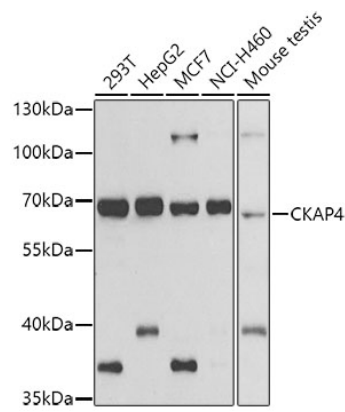
Affinity purification

Storage

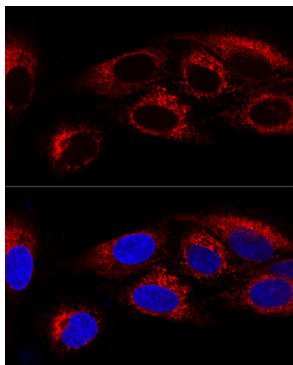
Store at -20°C. Avoid freeze / thaw cycles.

Buffer: PBS with 0.01% thimerosal, 50% glycerol, pH7.3.

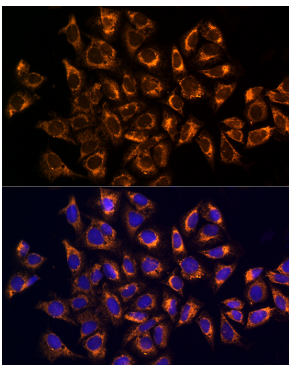
Validation Data



Western blot analysis of various lysates using CKAP4 Rabbit pAb (A7777) at 1:500 dilution.
Secondary antibody: HRP-conjugated Goat anti-Rabbit IgG (H+L) (AS014) at 1:10000 dilution.
Lysates/proteins: 25µg per lane.
Blocking buffer: 3% nonfat dry milk in TBST.
Detection: ECL Basic Kit (RM00020).
Exposure time: 90s.



Confocal immunofluorescence analysis of U2OS cells using CKAP4 Rabbit pAb (A7777) at dilution of 1:100. Blue: DAPI for nuclear staining.



Immunofluorescence analysis of U2OS cells using CKAP4 Rabbit pAb (A7777) at dilution of 1:100. Blue: DAPI for nuclear staining.