

GABARAPL1 Rabbit pAb

Catalog No.: A7790

Basic Information

Observed MW

16kDa

Calculated MW

14kDa

Category

Primary antibody

Applications

WB, ELISA

Cross-Reactivity

Human, Mouse, Rat

Background

Enables Tat protein binding activity and ubiquitin protein ligase binding activity. Predicted to be involved in autophagosome assembly; autophagy of mitochondrion; and cellular response to nitrogen starvation. Located in autophagosome. Colocalizes with mitochondrion.

Recommended Dilutions

WB 1:500 - 1:1000

ELISA Recommended starting concentration is 1 µg/mL. Please optimize the concentration based on your specific assay requirements.

Immunogen Information

Gene ID

23710

Swiss Prot

Q9H0R8

Immunogen

Synthetic peptide. This information is considered to be commercially sensitive.

Synonyms

ATG8; GEC1; APG8L; ATG8B; ATG8L; APG8-LIKE; GABARAPL1

Contact

 | 400-999-6126

 | cn.market@abclonal.com.cn

 | www.abclonal.com.cn

Product Information

Source

Rabbit

Isotype

IgG

Purification

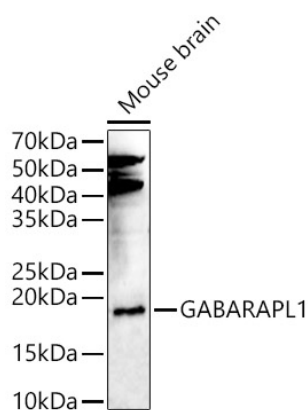
Affinity purification

Storage

Store at -20°C. Avoid freeze / thaw cycles.

Buffer: PBS with 0.09% Sodium azide, 50% glycerol, pH7.3.

Validation Data



Western blot analysis of lysates from Mouse brain, using GABARAPL1 Rabbit pAb (A7790) at 1:600 dilution.

Secondary antibody: HRP-conjugated Goat anti-Rabbit IgG (H+L) (AS014) at 1:10000 dilution.

Lysates/proteins: 25µg per lane.

Blocking buffer: 3% nonfat dry milk in TBST.

Detection: ECL Enhanced Kit (RM00021).

Exposure time: 180s.