

# [KO Validated] SAMHD1 Rabbit pAb

Catalog No.: A7794 **KO** **Validated** **1 Publications**

## Basic Information

### Observed MW

72kDa

### Calculated MW

72kDa

### Category

Primary antibody

### Applications

WB, IHC-P, IP, ELISA

### Cross-Reactivity

Human, Mouse, Rat

## Background

This gene may play a role in regulation of the innate immune response. The encoded protein is upregulated in response to viral infection and may be involved in mediation of tumor necrosis factor-alpha proinflammatory responses. Mutations in this gene have been associated with Aicardi-Goutieres syndrome.

## Recommended Dilutions

**WB** 1:500 - 1:2000

**IHC-P** 1:50 - 1:200

**IP** 0.5µg-4µg antibody for  
200µg-400µg extracts of  
whole cells

**ELISA** Recommended starting  
concentration is 1 µg/mL.  
Please optimize the  
concentration based on  
your specific assay  
requirements.

## Immunogen Information

### Gene ID

25939

### Swiss Prot

Q9Y3Z3

### Immunogen

Recombinant protein (or fragment). This information is considered to be commercially sensitive.

### Synonyms

DCIP; CHBL2; HDDC1; MOP-5; SBBI88; hSAMHD1; D1

## Contact

☎ | 400-999-6126

✉ | [cn.market@abclonal.com.cn](mailto:cn.market@abclonal.com.cn)

🌐 | [www.abclonal.com.cn](http://www.abclonal.com.cn)

## Product Information

### Source

Rabbit

### Isotype

IgG

### Purification

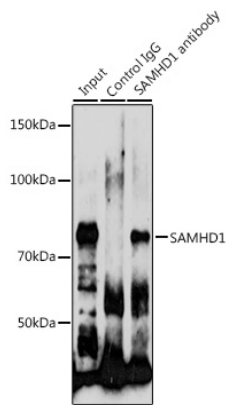
Affinity purification

### Storage

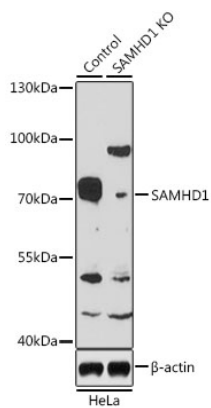
Store at -20°C. Avoid freeze / thaw cycles.

Buffer: PBS containing 50% glycerol, preserved with proclin300 or sodium azide (as specified on the Certificate of Analysis), pH 7.3.

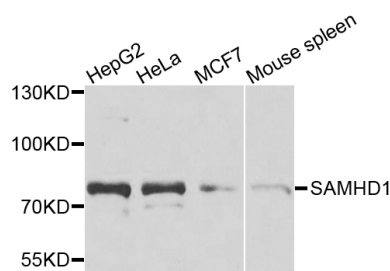
Validation Data



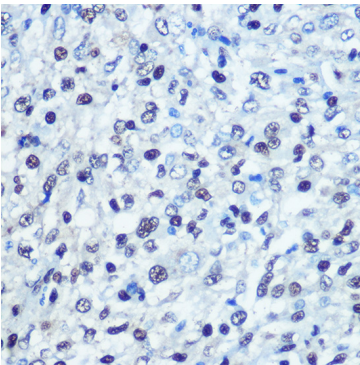
Immunoprecipitation analysis of 200 µg extracts of HeLa cells using 3 µg SAMHD1 antibody (A7794). Western blot was performed from the immunoprecipitate using SAMHD1 antibody (A7794) at a dilution of 1:1000.



Western blot analysis of lysates from wild type (WT) and SAMHD1 knockout (KO) HeLa cells, using [KO Validated] SAMHD1 Rabbit pAb (A7794) at 1:1000 dilution. Secondary antibody: HRP-conjugated Goat anti-Rabbit IgG (H+L) (AS014) at 1:10000 dilution. Lysates/proteins: 25µg per lane. Blocking buffer: 3% nonfat dry milk in TBST. Detection: ECL Basic Kit (RM00020). Exposure time: 3min.



Western blot analysis of various lysates using [KO Validated] SAMHD1 Rabbit pAb (A7794) at 1:1000 dilution. Secondary antibody: HRP-conjugated Goat anti-Rabbit IgG (H+L) (AS014) at 1:10000 dilution. Lysates/proteins: 25µg per lane. Blocking buffer: 3% nonfat dry milk in TBST. Detection: ECL Basic Kit (RM00020). Exposure time: 90s.



## Validation Data

---

Immunohistochemistry analysis of paraffin-embedded Human liver cancer using [KO Validated] SAMHD1 Rabbit pAb (A7794) at dilution of 1:100 (40x lens). Microwave antigen retrieval performed with 0.01M PBS Buffer (pH 7.2) prior to IHC staining.