

SLC22A11 Rabbit pAb

Catalog No.: A7816 **1 Publications**

Basic Information

Observed MW

65kDa

Calculated MW

60kDa

Category

Primary antibody

Applications

WB, ELISA

Cross-Reactivity

Human, Mouse, Rat

Background

The protein encoded by this gene is involved in the sodium-independent transport and excretion of organic anions, some of which are potentially toxic. The encoded protein is an integral membrane protein and is found mainly in the kidney and in the placenta, where it may act to prevent potentially harmful organic anions from reaching the fetus. Alternative splicing results in multiple transcript variants.

Recommended Dilutions

WB 1:500 - 1:1000

ELISA Recommended starting concentration is 1 µg/mL. Please optimize the concentration based on your specific assay requirements.

Immunogen Information

Gene ID

55867

Swiss Prot

Q9NSA0

Immunogen

Recombinant fusion protein containing a sequence corresponding to amino acids 40-140 of human SLC22A11 (NP_060954.1).

Synonyms

OAT4; hOAT4; SLC22A11

Contact

☎ | 400-999-6126

✉ | cn.market@abclonal.com.cn

🌐 | www.abclonal.com.cn

Product Information

Source

Rabbit

Isotype

IgG

Purification

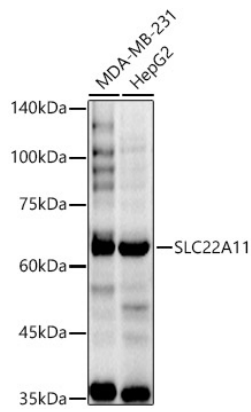
Affinity purification

Storage

Store at -20°C. Avoid freeze / thaw cycles.

Buffer: PBS with 0.02% sodium azide, 50% glycerol, pH7.3.

Validation Data



Western blot analysis of various lysates using SLC22A11 Rabbit pAb (A7816) at 1:1000 dilution.
Secondary antibody: HRP-conjugated Goat anti-Rabbit IgG (H+L) (AS014) at 1:10000 dilution.
Lysates/proteins: 25 μ g per lane.
Blocking buffer: 3% nonfat dry milk in TBST.
Detection: ECL Basic Kit (RM00020).
Exposure time: 30s.