

# CHRFAM7A Rabbit pAb

**Catalog No.: A7844**

## Basic Information

**Observed MW**

46kDa/

**Calculated MW**

46kDa

**Category**

Primary antibody

**Applications**

ELISA,WB,IHC-P

**Cross-Reactivity**

Human, Mouse, Rat

## Background

The nicotinic acetylcholine receptors (nAChRs) are members of a superfamily of ligand-gated ion channels that mediate fast signal transmission at synapses. The family member CHRNA7, which is located on chromosome 15 in a region associated with several neuropsychiatric disorders, is partially duplicated and forms a hybrid with a novel gene from the family with sequence similarity 7 (FAM7A). Alternative splicing has been observed, and two variants exist, for this hybrid gene. The N-terminally truncated products predicted by the largest open reading frames for each variant would lack the majority of the neurotransmitter-gated ion-channel ligand binding domain but retain the transmembrane region that forms the ion channel. Although current evidence supports transcription of this hybrid gene, translation of the nicotinic acetylcholine receptor-like protein-encoding open reading frames has not been confirmed.

## Recommended Dilutions

**WB** 1:500 - 1:2000**IHC-P** 1:50 - 1:200

## Immunogen Information

**Gene ID**

89832

**Swiss Prot**

Q494W8

**Immunogen**

Recombinant fusion protein containing a sequence corresponding to amino acids 1-150 of human CHRFAM7A (NP\_647536.1).

**Synonyms**

D-10; CHRNA7; NACHRA7; CHRNA7-DR1; CHRFAM7A

## Contact

 | 400-999-6126 | [cn.market@abclonal.com.cn](mailto:cn.market@abclonal.com.cn) | [www.abclonal.com.cn](http://www.abclonal.com.cn)

## Product Information

**Source**

Rabbit

**Isotype**

IgG

**Purification**

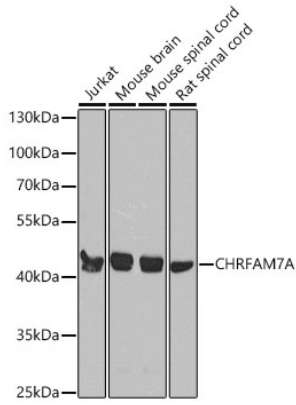
Affinity purification

**Storage**

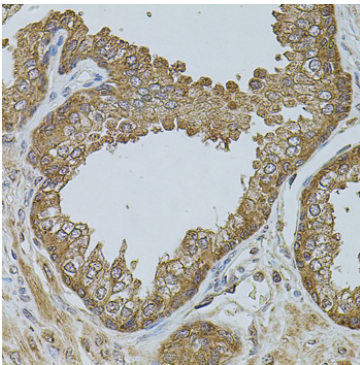
Store at -20°C. Avoid freeze / thaw cycles.

Buffer: PBS with 0.02% sodium azide,50% glycerol,pH7.3.

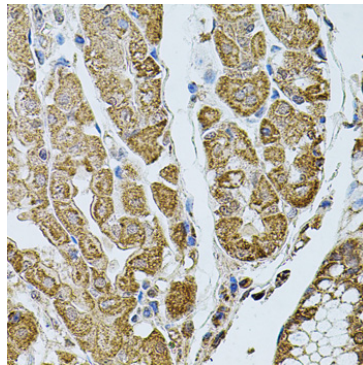
## Validation Data



Western blot analysis of various lysates using CHR FAM7A Rabbit pAb (A7844) at 1:1000 dilution. Secondary antibody: HRP Goat Anti-Rabbit IgG (H+L) (AS014) at 1:10000 dilution. Lysates / proteins: 25 µg per lane. Blocking buffer: 3 % nonfat dry milk in TBST. Detection: ECL Basic Kit (RM00020). Exposure time: 15s.



Immunohistochemistry analysis of paraffin-embedded Human prostate using CHR FAM7A Rabbit pAb (A7844) at dilution of 1:100 (40x lens). Perform microwave antigen retrieval with 10 mM PBS buffer pH 7.2 before commencing with IHC staining protocol.



Immunohistochemistry analysis of paraffin-embedded Human stomach using CHR FAM7A Rabbit pAb (A7844) at dilution of 1:100 (40x lens). Perform microwave antigen retrieval with 10 mM PBS buffer pH 7.2 before commencing with IHC staining protocol.