

# PRDM6 Rabbit pAb

Catalog No.: A7846

## Basic Information

### Observed MW

80kDa

### Calculated MW

64kDa

### Category

Primary antibody

### Applications

ELISA, WB

### Cross-Reactivity

Human, Mouse, Rat

## Background

The protein encoded by this gene is a transcriptional repressor and a member of the PRDM family. Family members contain a PR domain and multiple zinc-finger domains. The encoded protein is involved in regulation of vascular smooth muscle cells (VSMC) contractile proteins. Mutations in this gene result in patent ductus arteriosus 3 (PDA3).

## Recommended Dilutions

WB 1:500 - 1:2000

## Immunogen Information

### Gene ID

93166

### Swiss Prot

Q9NQX0

### Immunogen

Recombinant fusion protein containing a sequence corresponding to amino acids 376-595 of human PRDM6 (NP\_001129711.1).

### Synonyms

PDA3; KMT8C; PRISM; PRDM6

## Contact

☎ | 400-999-6126

✉ | [cn.market@abclonal.com.cn](mailto:cn.market@abclonal.com.cn)

🌐 | [www.abclonal.com.cn](http://www.abclonal.com.cn)

## Product Information

### Source

Rabbit

### Isotype

IgG

### Purification

Affinity purification

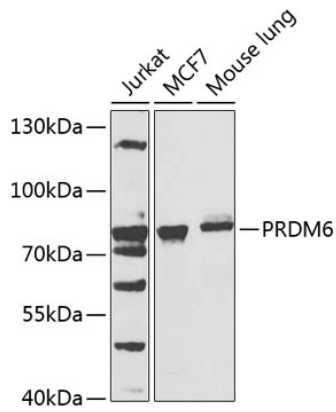
### Storage

Store at -20°C. Avoid freeze / thaw cycles.

Buffer: PBS with 0.02% sodium azide, 50% glycerol, pH7.3.

## Validation Data

---



Western blot analysis of extracts of various cell lines, using PRDM6 antibody (A7846) at 1:1000 dilution.  
Secondary antibody: HRP Goat Anti-Rabbit IgG (H+L) (AS014) at 1:10000 dilution.  
Lysates/proteins: 25µg per lane.  
Blocking buffer: 3% nonfat dry milk in TBST.  
Detection: ECL Basic Kit (RM00020).  
Exposure time: 90s.