

SPICE1 Rabbit pAb

Catalog No.: A7855

Basic Information

Observed MW

120kDa

Calculated MW

96kDa

Category

Primary antibody

Applications

ELISA, WB

Cross-Reactivity

Human, Mouse, Rat

Background

Involved in metaphase plate congression; mitotic spindle assembly; and regulation of centriole replication. Located in centriole; centrosome; and spindle.

Recommended Dilutions

WB 1:500 - 1:2000

Immunogen Information

Gene ID

152185

Swiss Prot

Q8N0Z3

Immunogen

Recombinant fusion protein containing a sequence corresponding to amino acids 1-220 of human SPICE1 (NP_653319.1).

Synonyms

SPICE; CCDC52; SPICE1

Contact

☎ | 400-999-6126

✉ | cn.market@abclonal.com.cn

🌐 | www.abclonal.com.cn

Product Information

Source

Rabbit

Isotype

IgG

Purification

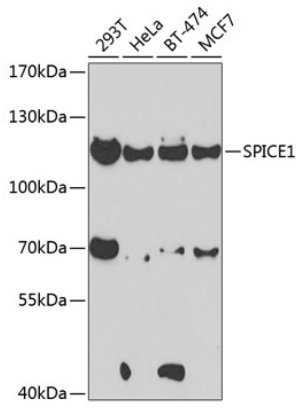
Affinity purification

Storage

Store at -20°C. Avoid freeze / thaw cycles.

Buffer: PBS with 0.02% sodium azide, 50% glycerol, pH7.3.

Validation Data



Western blot analysis of extracts of various cell lines, using SPICE1 antibody (A7855) at 1:1000 dilution.
Secondary antibody: HRP Goat Anti-Rabbit IgG (H+L) (AS014) at 1:10000 dilution.
Lysates/proteins: 25µg per lane.
Blocking buffer: 3% nonfat dry milk in TBST.
Detection: ECL Basic Kit (RM00020).
Exposure time: 90s.