

APOL1 Rabbit pAb

Catalog No.: A7943

Basic Information

Observed MW

Refer to figures

Calculated MW

44kDa

Category

Primary antibody

Applications

ELISA, IHC-P

Cross-Reactivity

Human, Rat

Background

This gene encodes a secreted high density lipoprotein which binds to apolipoprotein A-I. Apolipoprotein A-I is a relatively abundant plasma protein and is the major apoprotein of HDL. It is involved in the formation of most cholesteryl esters in plasma and also promotes efflux of cholesterol from cells. This apolipoprotein L family member may play a role in lipid exchange and transport throughout the body, as well as in reverse cholesterol transport from peripheral cells to the liver. Several different transcript variants encoding different isoforms have been found for this gene.

Recommended Dilutions

IHC-P 1:50 - 1:100

Immunogen Information

Gene ID

8542

Swiss Prot

O14791

Immunogen

Recombinant fusion protein containing a sequence corresponding to amino acids 179-398 of human APOL1 (NP_003652.2).

Synonyms

APOL; APO-L; FSGS4; APOL-I; APOL1

Contact

☎ | 400-999-6126

✉ | cn.market@abclonal.com.cn

🌐 | www.abclonal.com.cn

Product Information

Source

Rabbit

Isotype

IgG

Purification

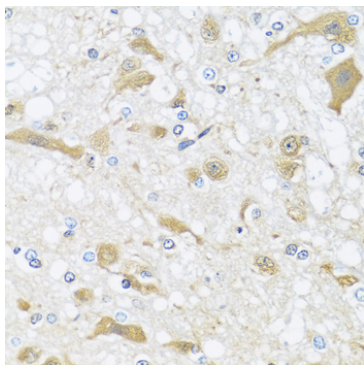
Affinity purification

Storage

Store at -20°C. Avoid freeze / thaw cycles.

Buffer: PBS with 0.02% sodium azide, 50% glycerol, pH 7.3.

Validation Data



Immunohistochemistry analysis of paraffin-embedded Rat brain using APOL1 Rabbit pAb (A7943) at dilution of 1:100 (40x lens). Perform microwave antigen retrieval with 10 mM PBS buffer pH 7.2 before commencing with IHC staining protocol.