

# BRCC3 Rabbit pAb

Catalog No.: A7995

**1 Publications**

## Basic Information

**Observed MW**

33kDa/36kDa

**Calculated MW**

36kDa

**Category**

Primary antibody

**Applications**

ELISA, WB

**Cross-Reactivity**

Human, Mouse, Rat

## Background

This gene encodes a subunit of the BRCA1-BRCA2-containing complex (BRCC), which is an E3 ubiquitin ligase. This complex plays a role in the DNA damage response, where it is responsible for the stable accumulation of BRCA1 at DNA break sites. The component encoded by this gene can specifically cleave Lys 63-linked polyubiquitin chains, and it regulates the abundance of these polyubiquitin chains in chromatin. The loss of this gene results in abnormal angiogenesis and is associated with syndromic moyamoya, a cerebrovascular angiopathy. Alternative splicing results in multiple transcript variants. A related pseudogene has been identified on chromosome 5.

## Recommended Dilutions

**WB** 1:500 - 1:2000

## Immunogen Information

**Gene ID**

79184

**Swiss Prot**

P46736

**Immunogen**

Recombinant fusion protein containing a sequence corresponding to amino acids 1-316 of human BRCC3 (NP\_077308.1).

**Synonyms**

C6.1A; BRCC36; CXorf53; BRCC3

## Contact

 | 400-999-6126 | [cn.market@abclonal.com.cn](mailto:cn.market@abclonal.com.cn) | [www.abclonal.com.cn](http://www.abclonal.com.cn)

## Product Information

**Source**

Rabbit

**Isotype**

IgG

**Purification**

Affinity purification

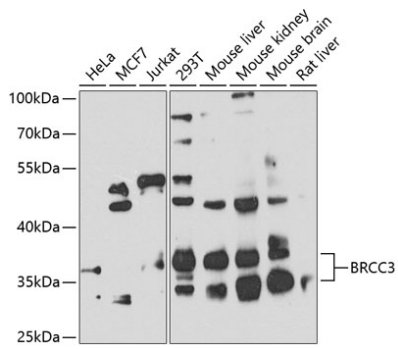
**Storage**

Store at -20°C. Avoid freeze / thaw cycles.

Buffer: PBS with 0.02% sodium azide, 50% glycerol, pH 7.3.

## Validation Data

---



Western blot analysis of extracts of various cell lines, using BRCC3 antibody (A7995) at 1:1000 dilution.  
Secondary antibody: HRP Goat Anti-Rabbit IgG (H+L) (AS014) at 1:10000 dilution.  
Lysates/proteins: 25µg per lane.  
Blocking buffer: 3% nonfat dry milk in TBST.  
Detection: ECL Basic Kit (RM00020).  
Exposure time: 90s.